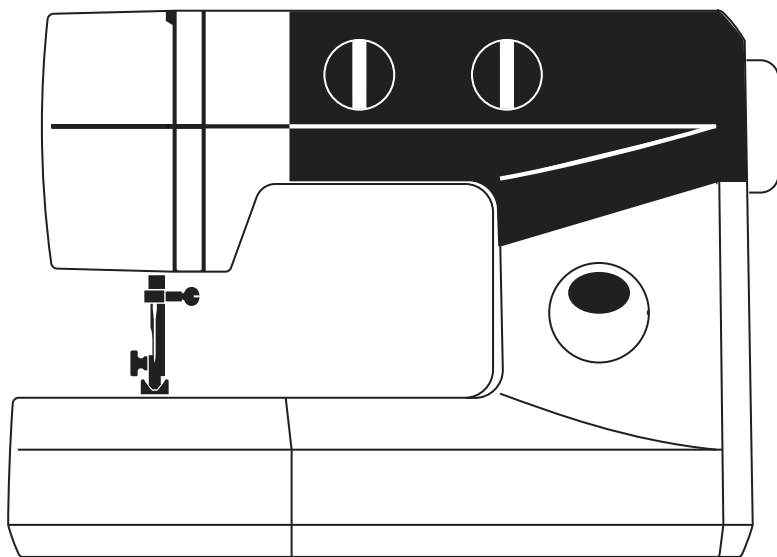

User's Guide

Huskystar

207/215

Type B



This household sewing machine is designed to comply with IEC/EN 60335-2-28 and UL1594

IMPORTANT SAFETY INSTRUCTIONS

When using an electrical appliance, basic safety precautions should always be followed, including the following:

Read all instructions before using this household sewing machine.

DANGER - To reduce the risk of electric shock:

- A sewing machine should never be left unattended when plugged in. Always unplug this sewing machine from the electric outlet immediately after using and before cleaning.
- Always unplug before relamping. Replace bulb with same type rated 15 Watt.

WARNING - To reduce the risk of burns, fire, electric shock, or injury to persons:

- This sewing machine is not intended for use by persons (including children) with reduced physical, sensory or mental capabilities, or lack of experience and knowledge, unless they have been given supervision or instruction concerning use of the sewing machine by a person responsible for their safety.
- Children should be supervised to ensure that they do not play with the sewing machine.
- Use this sewing machine only for its intended use as described in this manual. Use only attachments recommended by the manufacturer as contained in this manual.
- Never operate this sewing machine if it has a damaged cord or plug, if it is not working properly, if it has been dropped or damaged, or dropped into water. Return the sewing machine to the nearest authorized dealer or service center for examination, repair, electrical or mechanical adjustment.
- Never operate the sewing machine with any air openings blocked. Keep ventilation openings of the sewing machine and foot controller free from the accumulation of lint, dust, and loose cloth.
- Keep fingers away from all moving parts. Special care is required around the sewing machine needle.
- Always use the proper needle plate. The wrong plate can cause the needle to break.
- Do not use bent needles.
- Do not pull or push fabric while stitching. It may deflect the needle causing it to break.
- Switch the sewing machine off ("0") when making any adjustment in the needle area, such as threading needle, changing needle, threading bobbin, or changing presser foot, etc.
- Always unplug sewing machine from the electrical outlet when removing covers, lubricating, or when making any other user servicing adjustments mentioned in the instruction manual.
- Never drop or insert any object into any opening.
- Do not use outdoors.
- Do not operate where aerosol (spray) products are being used or where oxygen is being administered.
- To disconnect, turn all controls to the off ("0") position, then remove plug from outlet.
- Do not unplug by pulling on cord. To unplug, grasp the plug, not the cord.

SAVE THESE INSTRUCTIONS

For the USA and Canada

This sewing machine has a polarized plug (one blade wider than the other). To reduce the risk of electric shock, this plug is intended to fit in a polarized outlet only one way. If the plug does not fit fully in the outlet, reverse the plug. If it still does not fit, contact a qualified electrician to install the proper outlet. Do not modify the plug in any way.

TABLE OF CONTENTS

SECTION I

ESSENTIAL PARTS

Names of Parts	2
----------------	---

SECTION 2

GETTING READY TO SEW

Extension Table	3
Standard Accessories and	
Storage Place	4
Connecting the Machine to the	
Power Supply	5
Foot Control	5
Sewing Light	6
To Attach and Remove the	
Presser Foot	6
Changing Needles	7
Thread and Needle Chart	7
Setting Spool Pins	8
Removing or Inserting the	
Bobbin Case	8
Winding the Bobbin	9
Threading Bobbin Case	10
Threading the Machine	11
Bringing Up Bobbin Thread	12
Balancing Needle Thread	
Tension	13
Pattern Selector Dial	14
Stitch Length Dial	15
Stitch Width Dial	15
Reverse Stitch Button	16
Dropping the Feed Teeth	16
Presser Foot Pressure Dial	16

SECTION 3

BASIC SEWING

Straight Stitch Sewing	17
------------------------	----

To Change Sewing Direction	18
Using the Seam Guides on	
the Needle Plate	19
Turning Square Corners	19
Zigzag Stitching	20

SECTION 4

UTILITY STITCHING

Overcasting	21
Multiple Zigzag	21
Overcast Stitch (Model 215)	22
Reinforced Straight Stitch (Model 215)	22
Sewing Buttons	23
Buttonhole	24-25
Corded Buttonhole	26
Zipper Sewing	27
Blind Stitch Hemming	28

SECTION 5

DECORATIVE STITCHING

Shell Tuck	29
Stretch Stitch Patterns (Model 215)	29
Smocking (Model 215)	30
Elastic Casing Stitching (Model 215)	30
Applique	31
Fagoting (Model 215)	31

SECTION 6

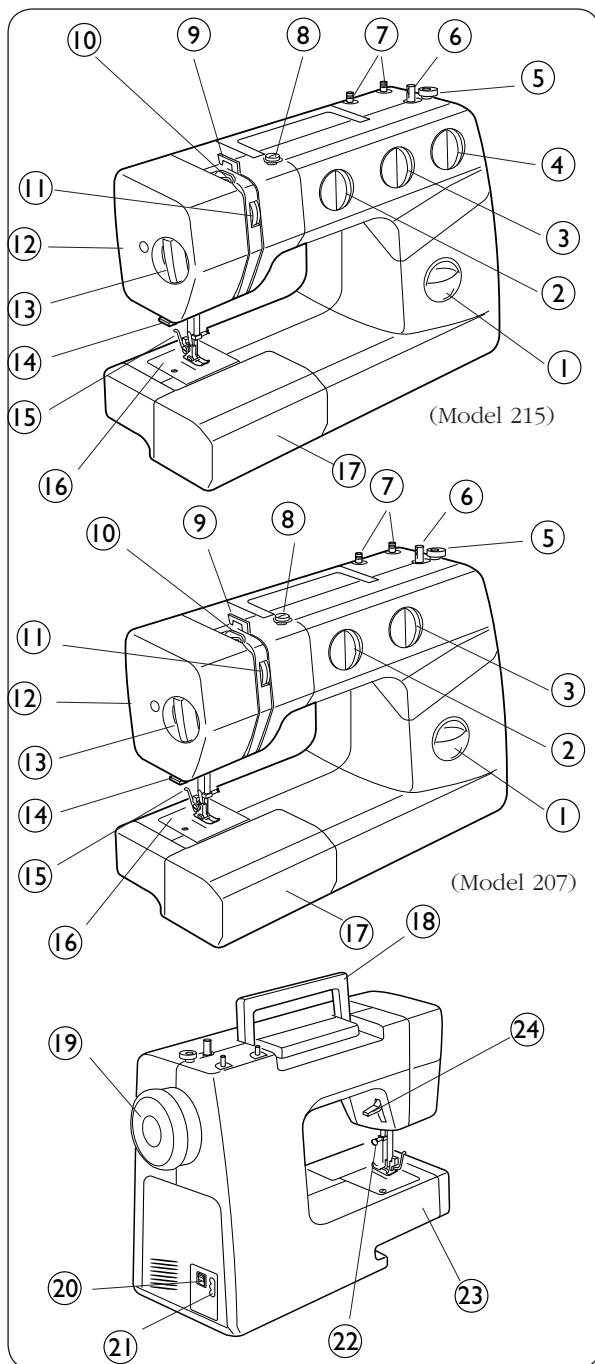
CARE OF YOUR MACHINE

Dismantling and Assembling the	
Hook Assembly Area	32
Cleaning the Feed Teeth	33
Oiling the Machine	34
Troubleshooting	35-36

SECTION I ESSENTIAL PARTS

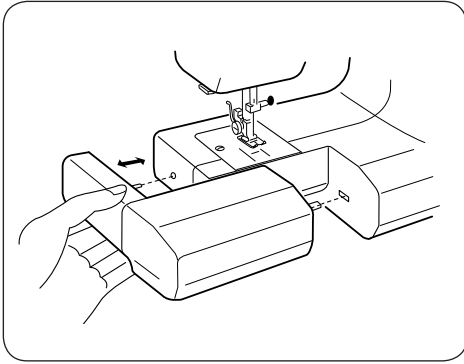
Name of Parts

- 1 Reverse stitch button
- 2 Pattern selector dial
- 3 Stitch length dial
- 4 Stitch width dial (for Model 215)
- 5 Bobbin winder stopper
- 6 Bobbin winder spindle
- 7 Spool pins
- 8 Bobbin winder thread guide
- 9 Thread guide
- 10 Thread take-up lever
- 11 Thread tension dial
- 12 Face plate
- 13 Presser Foot Pressure dial
- 14 Thread cutter
- 15 Presser foot holder
- 16 Needle plate
- 17 Extension table
- 18 Carrying handle
- 19 Handwheel
- 20 Power switch
- 21 Machine socket
- 22 Needle clamp screw
- 23 Free arm
- 24 Presser foot lifter



SECTION 2 GETTING READY TO SEW

Extension Table



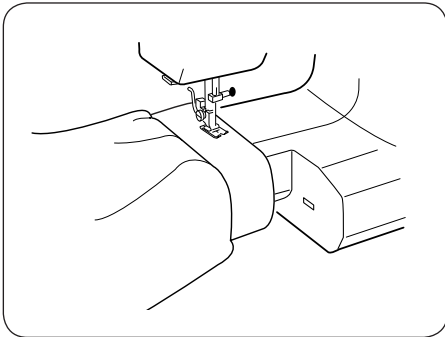
The extension table provides added sewing surface and can be easily removed for free arm sewing.

Detaching the table:

Pull the table away from the machine, as illustrated.

Attaching the table:

Push the extension table until it snaps into the machine.



Advantages and uses of free arm sewing:

- To avoid fabric bunching around the needle when bartacking to reinforce pockets, plackets and waistbands.
- For stitching sleeves, waistbands, pant legs or any circular garment.
- For darning socks or mending knees, elbows or areas of wear in children's clothes.

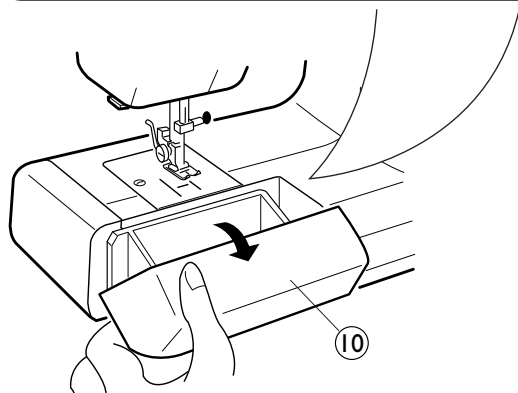
Note: Some fabrics have a lot of excess dye which can cause discoloration on other fabric but also on your sewing machine. This discoloring may be very difficult or impossible to remove.

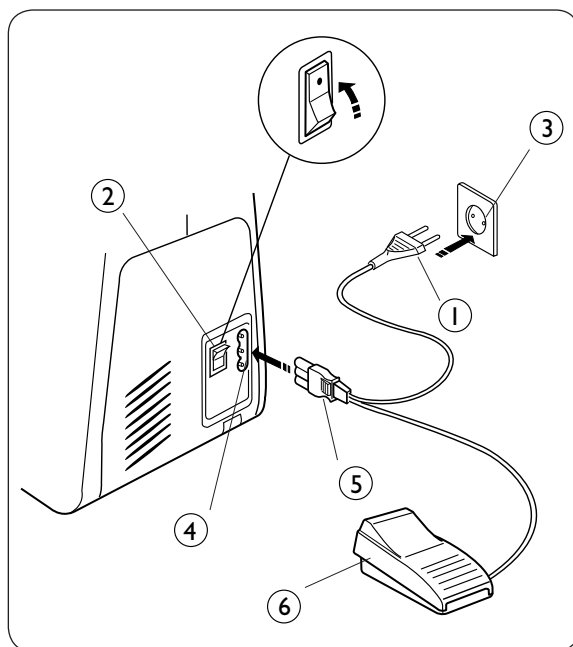
Fleece and denim fabric in especially red and blue often contain a lot of excess dye.

If you suspect that your fabric/ready-to-wear garment contains a lot of excess dye, always pre-wash it before sewing/embroidering to avoid the discoloring.

Standard Accessories and Storage Place

- ① Zipper foot
- ② Sliding buttonhole foot
- ③ Hem guide
- ④ Seam ripper
- ⑤ Large screwdriver
- ⑥ Bobbins
- ⑦ Set of needles
- ⑧ Oil
- ⑨ Overcast foot (for Model 215)
- ⑩ Extension table



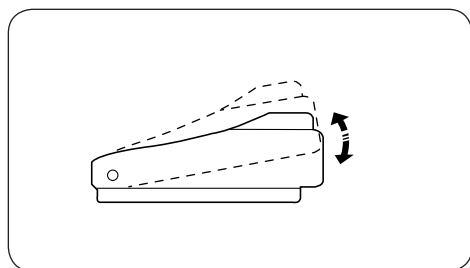


Connecting the Machine to the Power Supply

Before connecting the power cord, make sure the voltage and frequency shown on the machine conform to your electrical power.

1. Turn off the power switch (2) .
2. Insert the machine plug (5) into the machine socket (4) .
3. Insert the power supply plug (1) into the outlet (3) .
4. Turn on the power switch (2) to turn on the power and sewing light.

- | | |
|-----------------------|--------------------|
| (1) Power supply plug | (2) Power switch |
| (3) Outlet | (4) Machine socket |
| (5) Machine plug | (6) Foot control |

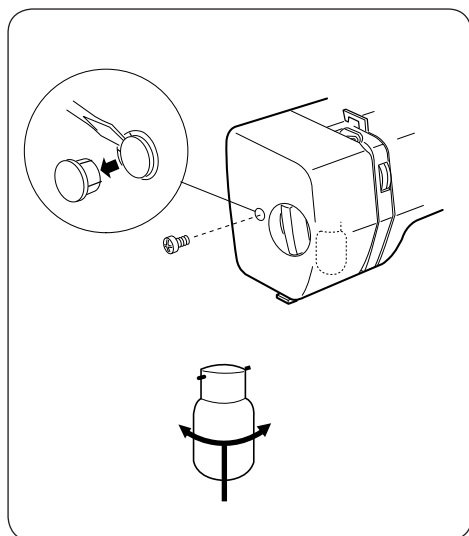


Foot Control

Sewing speed can be varied by the foot control.

The harder you press on the control, the faster the machine runs.

Foot controller type YC-482J or TJC-150 for use with sewing machine Model 207 and 215 (for USA/Canada only).



Sewing Light

The sewing light is located behind the face plate.

To change the bulb, take the face plate off the sewing machine by removing the set screw.



Unplug the power supply before changing the bulb.

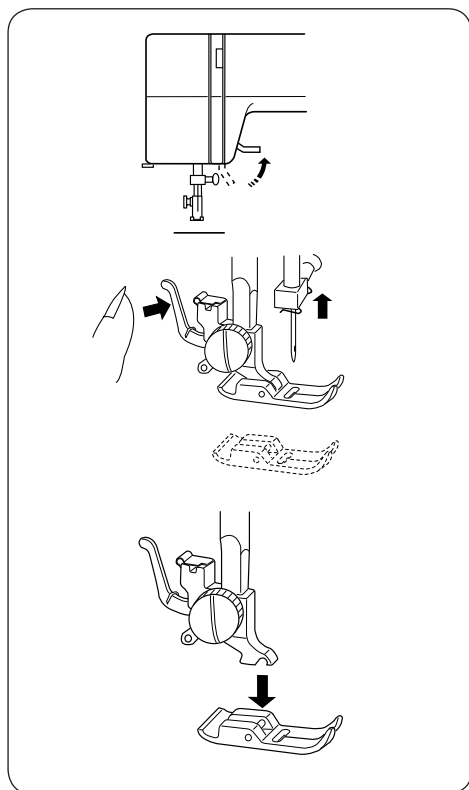
To remove the bulb:

- Push and twist to the left.

To replace the bulb:

- Push and twist to the right.

The maximum power of the light bulb is 15W.



To Attach and Remove the Presser Foot



Unplug the power supply before changing the presser foot.

To remove:

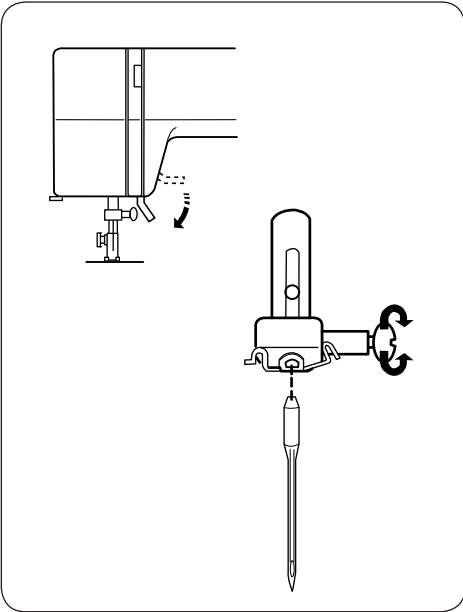
Turn the handwheel toward you to raise the needle to its highest position.

Raise the presser foot.

Press the lever on the back of the ankle.
The presser foot will drop off.

To attach:

Place the presser foot so the pin on the foot lies just under the groove of the ankle.
Lower the ankle to lock the foot in place.



Changing Needles



Switch off the main switch.

Raise the needle by turning the handwheel toward you and lower the presser foot.

Loosen the needle clamp screw by turning it counterclockwise.

Remove the needle from the clamp.

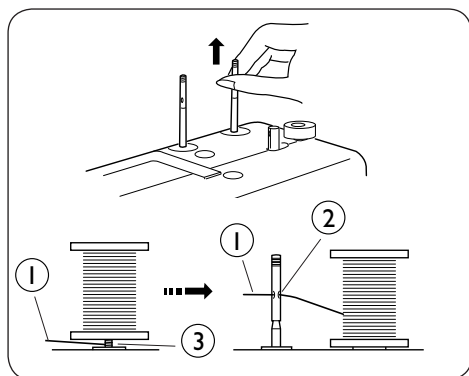
Insert the new needle into the clamp with the flat side away from you.

When inserting the needle into the clamp, push it up as far as it will go and tighten the clamp screw firmly with the screwdriver.

NOTE: *Check your needles frequently for barbed or blunted points. Snags and runs in knits, fine silks and silk-like fabrics are permanent and are almost always caused by a damaged needle.*

Thread and Needle Chart

Needle Size	Fabric	Cotton Thread Size	Silk Thread Size
No. 60 (#7)	Fine Silk		
No. 70 (#10)	Crepe de chine	70 - 80	100 - 140
No. 80 (#12)	Poplin Pure Silk	50 - 60	80 - 100
No. 80-90 (#12-14)	Broadcloth Cotton	40 - 50	60 - 70
No. 90-100 (#14-16)	Wool	30 - 40	50 - 60
No. 90-110 (#14-18)	Denim	30	45 - 50
Stretch Needle No. 70 (#10)	Tricot	70 - 80	100 - 140

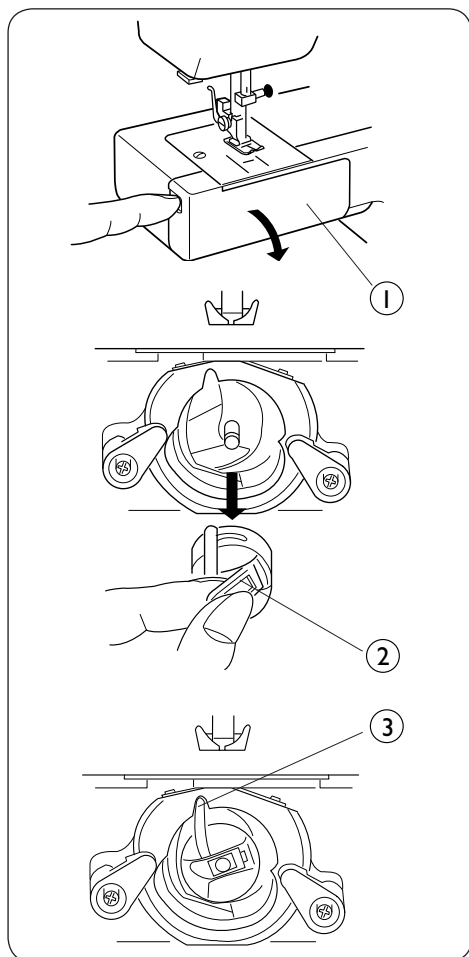


Setting Spool Pins

The spool pins are used for holding the spool of thread to feed thread to the machine. To use, pull up the spool pin. Push down for storage.

① Upper thread ② Hole ③ Tangle

NOTE: When using thread which has a tendency to tangle around the spool pin, thread through the hole of spool pin as shown. The hole should face the thread spool.



Removing or Inserting the Bobbin Case

Switch off the main switch.



Open the hook cover.

Hook cover

①

Raise the needle by turning the handwheel toward you.

Take out the bobbin case by holding the latch.

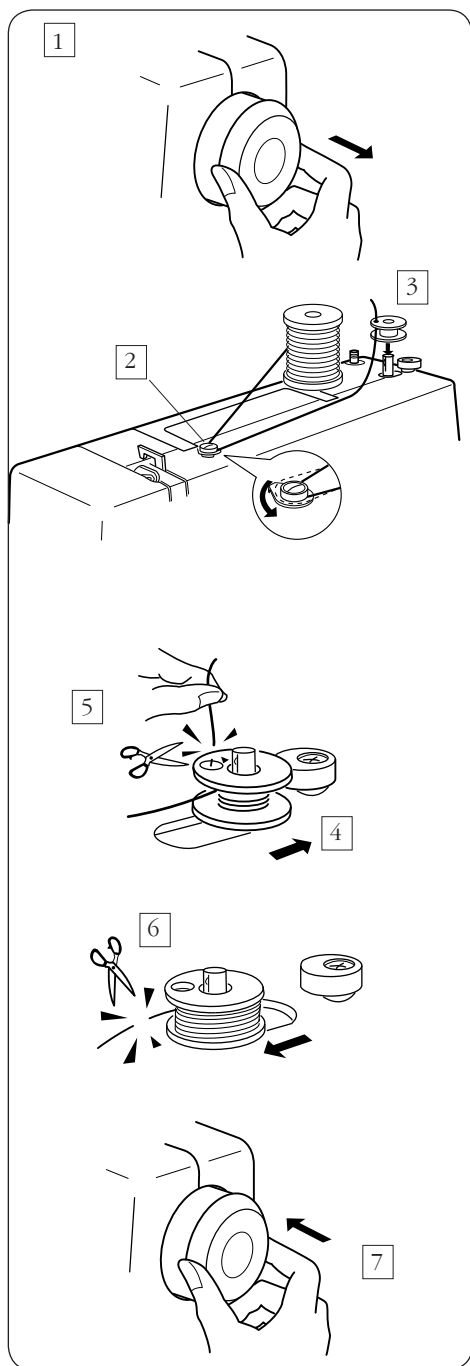
Latch

②

When inserting the bobbin case, place the finger into the recess of the hook race area.

Finger

③



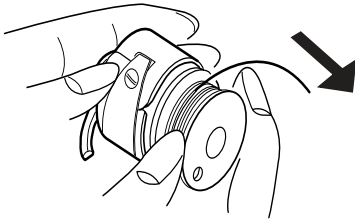
Winding the Bobbin

- 1 Pull the handwheel out to disengage.
- 2 Draw the thread from the spool. Guide the thread around the bobbin winder thread guide.
- 3 Insert the thread through the hole in the bobbin from the inside to the outside. Put the bobbin on the bobbin winder spindle.
- 4 Push it to the right.
- 5 With the free end of the thread held in your hand, depress the foot control. Stop the machine when it has made a few turns, and cut the thread close to the hole in the bobbin.
- 6 Depress the foot control again. When the bobbin is fully wound, stop the machine. Return the bobbin winder spindle to its original position by moving the spindle to the left, and cut the thread.
- 7 Push the handwheel to the left to re-engage. (original position).

NOTE: Return the bobbin winder spindle to the left when the machine stops.

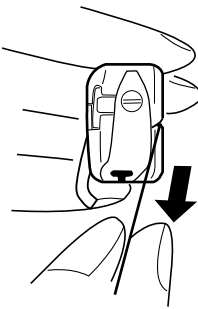
Threading Bobbin Case

1



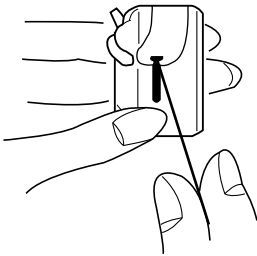
- 1 Place the bobbin into the bobbin case. Make sure the thread unwinds in the direction of arrow (clockwise).

2



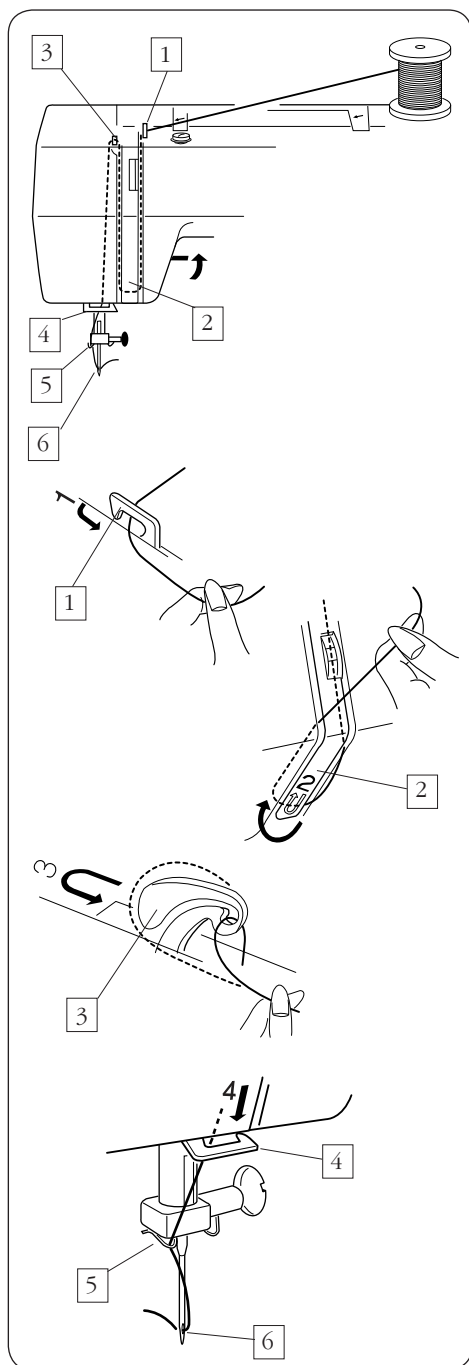
- 2 Pull the thread into the bobbin case slot.

3



- 3 Draw the thread under the tension spring and into the delivery eye.

NOTE: Leave about 10 cm (4") of free thread.



Threading the Machine



Switch off the main switch.

Raise the take-up lever to its highest position by turning the handwheel toward you. Raise the presser foot. Place the spool on the spool pin as shown, with the thread coming from the back of the spool.

- 1 Draw the thread into the thread guide using both hands.
- 2 While holding the thread near the spool, draw it down into the tension area and then around the check spring holder.
- 3 Firmly draw the thread up and through the take-up lever from right to left.
- 4 Then, draw the thread down and slip it into the lower thread guide.
- 5 Draw the thread down and slip it into the needle bar thread guide.
- 6 Thread the needle eye from front to back.

NOTE: *You may want to cut the end of the thread with sharp scissors for easier needle threading.*

Drawing Up Bobbin Thread

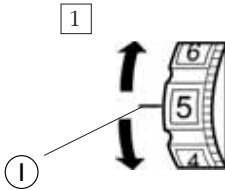
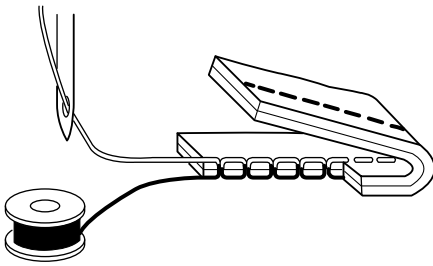
- 1 Raise the presser foot and hold the needle thread lightly with your left hand.

- 2 Turn the handwheel slowly toward you with your right hand until the needle goes down. Continue turning the handwheel until the take-up lever is back up to its highest position. Lightly pull up the needle thread forming a loop of the bobbin thread.

- 3 Pull 15 cm (6") of both threads back and under the presser foot.

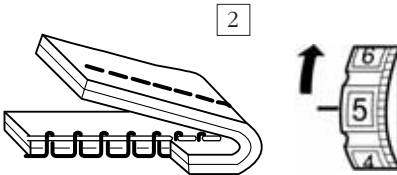
Balancing Needle Thread Tension

The needle thread and the bobbin thread should interlock in the center of two layers of fabric in straight stitch seams.

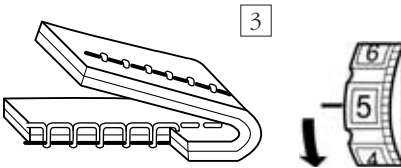


- 1 Match the desired thread tension number with the setting mark.

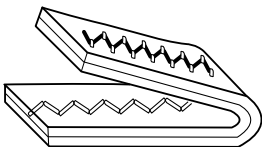
① Setting mark



- 2 Loosen the needle thread tension by moving the dial to a lower number.



- 3 Tighten the needle thread tension by moving the dial to a higher number.

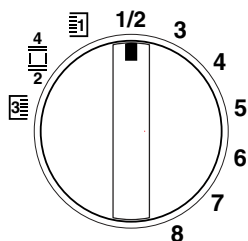
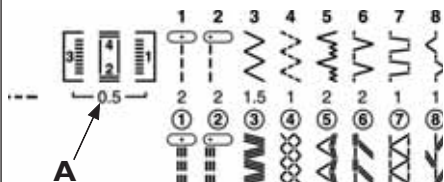


Thread Tension for Zigzag Sewing

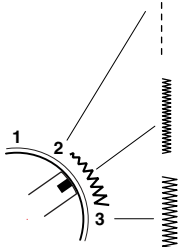
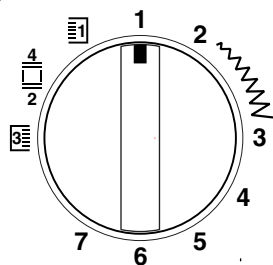
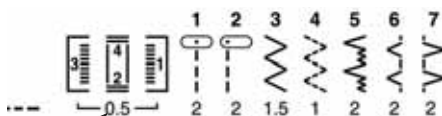
To obtain better zigzag stitches, the upper tension should be slightly lower than for straight stitch sewing.

The upper thread should appear slightly on the reverse side of the fabric.

(Model 215)



(Model 207)



Pattern Selector Dial

Raise the needle above the fabric and match the setting mark with the desired pattern number by turning the pattern selector dial.

Selecting Stretch Stitch Patterns (for Model 215)

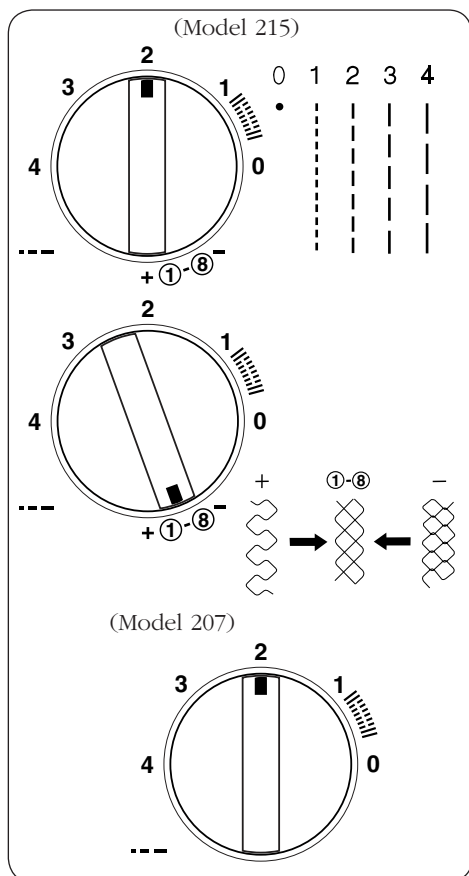
When sewing stretch stitch patterns, set the stitch length dial at " ①-⑧ ".

You can balance your stretch stitches by turning the stitch length dial as follows:


If patterns are dense, turn the dial toward " + ".

If patterns are sparse, turn the dial toward " - ".

NOTE: The stitch width changes as shown by turning the pattern selector dial between 2 and 3. (for Model 207)

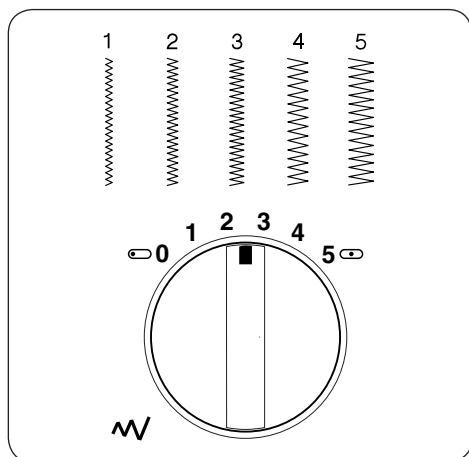


Stitch Length Dial

- Match the setting mark with the desired number by turning the stitch length dial.
- The higher the number, the longer the stitch length.
- "  " is the correct setting for buttonhole stitching.
- Adjust the dial in the 0.5 to 4 range when you sew the zigzag stitch.
- Place the setting mark at " ①-⑧ " to sew the stretch stitch pattern correctly.

How to make the stretch stitch pattern look better:

If the stretch stitch pattern is not attractive, turn the stitch length dial in the direction of "-" to compress it, and in the direction of "+" to expand it.



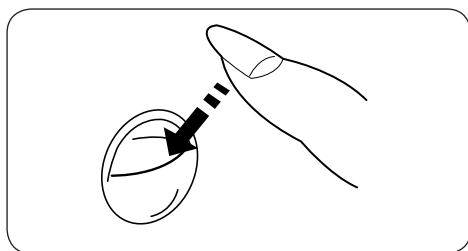
Stitch width Dial (for Model 215)

- Match the setting mark with the desired number by turning the stitch width dial.
- The higher the number, the wider the stitch width.
- When the stitch width is narrower, the right side of the pattern is cut off.

(Example)

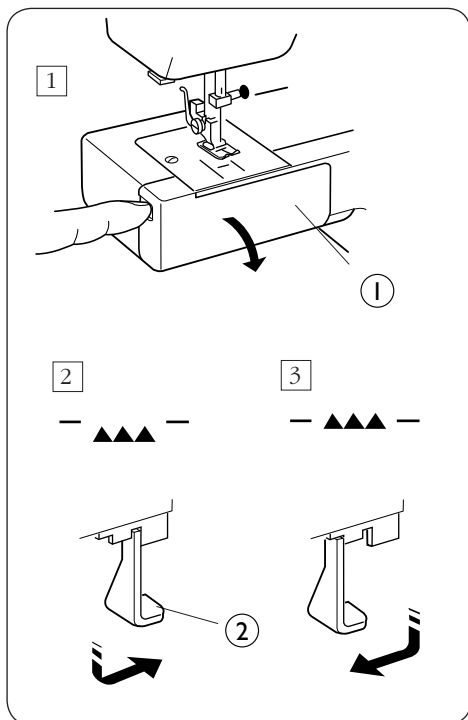
Number [3]    Number [5]

NOTE: Raise the needle above the fabric when you turn the stitch width dial.



Reverse Stitch Button

As long as you keep the reverse stitch button depressed, the machine sews backwards.



Dropping the Feed Teeth

- 1 Open the hook cover.

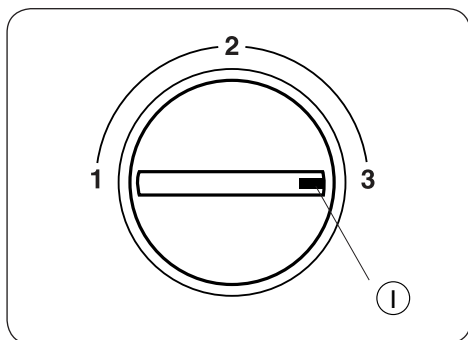
① Hook cover

- 2 To drop the feed teeth, pull down the lever and move it in the direction of the arrow, as illustrated.

② Lever

- 3 To raise the feed teeth, pull down the lever and move it in the direction of the arrow, as illustrated.

NOTE: The feed teeth must be up for normal sewing.



Presser Foot Pressure Dial

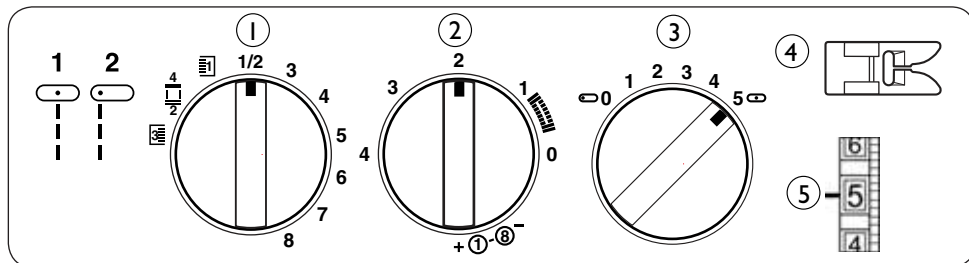
The presser foot pressure dial should be set at "3" for regular sewing. Reduce the pressure to "2" for applique, cut work, drawn work, basting and embroidery. Set the pressure dial to "3" when sewing chiffon, lace, organdy and other fine fabrics. Velours and knits with a lot of stretch may require a "1" setting.

Setting mark

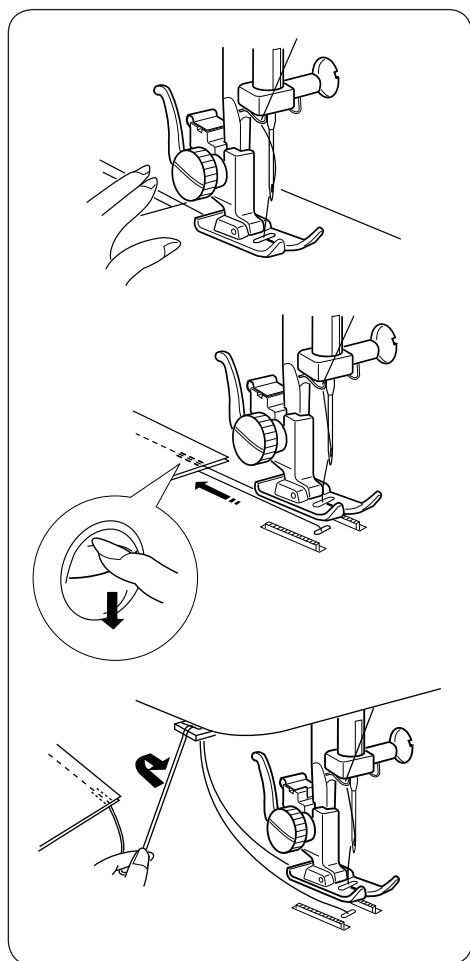
①

SECTION 3 BASIC SEWING

Straight Stitch Sewing



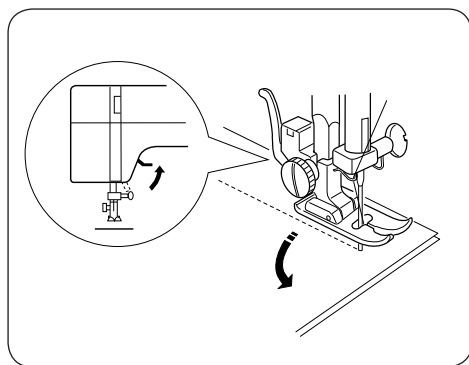
- ① Stitch selector: 1 or 2 ② Stitch length: 1.5 - 4 ③ Stitch width: 5 or 0 (for Model 215)
 ④ Presser foot: Zigzag foot ⑤ Thread tension: 2 - 6



Raise the presser foot and position the fabric along seam guide line on the needle plate.
 Lower the needle into the fabric by turning the handwheel toward you.
 Lower the presser foot and be sure the threads are toward the back of the machine.
 Depress the foot control.
 Gently guide the fabric along the seam guide line letting the fabric feed by itself.

For reinforcing the ends of seams, press the reverse stitch button and sew several reverse stitches.
 Raise the presser foot and remove the fabric, drawing the threads to the back.

Cut both threads using the thread cutter.
 The threads are cut the proper length for starting the next seam.

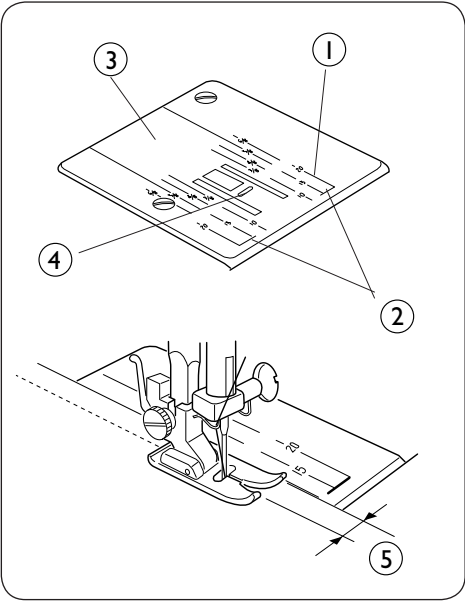


To Change Sewing Direction

Stop the machine and turn the handwheel toward you to bring the needle down into the fabric.

Raise the presser foot.

Pivot the fabric around the needle to change sewing direction as desired. Lower the presser foot and continue sewing.



Using the Seam Guides on the Needle Plate

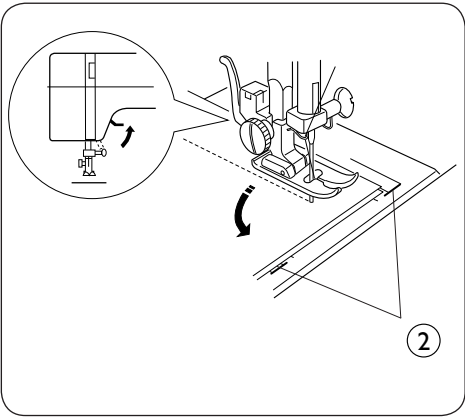
The seam guides on the needle plate help you measure seam width.

NOTE: The numbers indicate the distance between the center needle position and the guide line.

Guide lines

- ① Cornering guide
- ② Needle plate
- ③ Needle plate hole
- ④ Seam width from the center
- ⑤ needle position

Numbers on the needle plate	10	15	20	3/8"	4/8"	5/8"	6/8"
Distance in centimeters	1.0	1.5	2.0	1.0	1.3	1.6	1.9



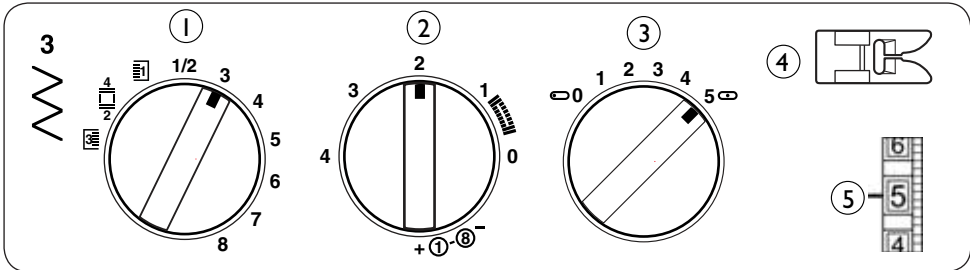
Turning Square Corners

To turn a square corner 1.6 cm (5/8") from the fabric edge:

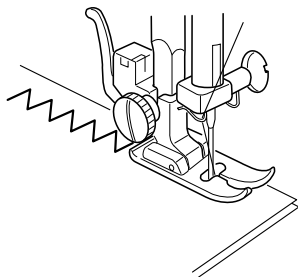
When the fabric edge facing you lines up with the cornering guide as illustrated, stop stitching and lower the needle by turning the handwheel toward you. Raise the presser foot and turn the fabric to line the edge with the 1.6 cm (5/8") seam guide. Lower the presser foot and begin stitching in the new direction.

- ② Cornering guide

Zigzag Stitching



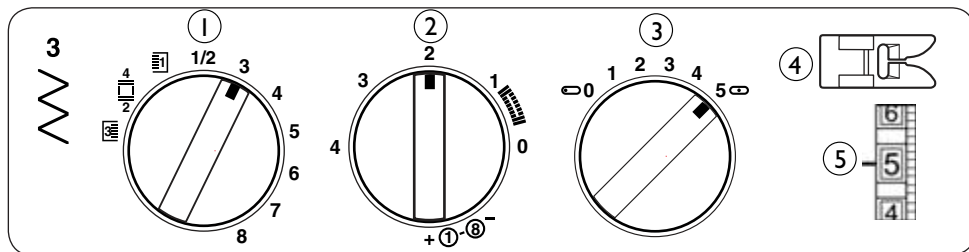
- ① Stitch selector: 3 ② Stitch length: - 4 ③ Stitch width: 5 (for Model 215)
④ Presser foot: Zigzag foot ⑤ Thread tension: 2 - 6



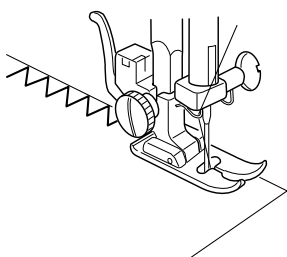
Simple zigzag stitching is widely used for overcasting, sewing on buttons, elastic, etc.

SECTION 4: UTILITY STITCHING

Overcasting

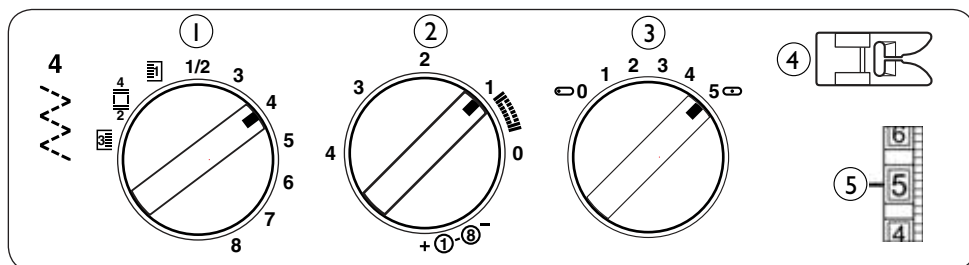


- ① Stitch selector: 3 ② Stitch length: 1 - 2 ③ Stitch width: 5 (for Model 215)
 ④ Presser foot: Zigzag foot ⑤ Thread tension: 4 - 6

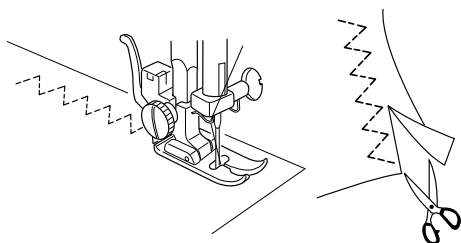


This type of stitch is used on the seam allowance to prevent fabric from fraying at raw edges.

Multiple Zigzag



- ① Stitch selector: 4 ② Stitch length: 0.5 - 1.5 ③ Stitch width: 5 (for Model 215)
 ④ Presser foot: Zigzag foot ⑤ Thread tension: 4 - 6

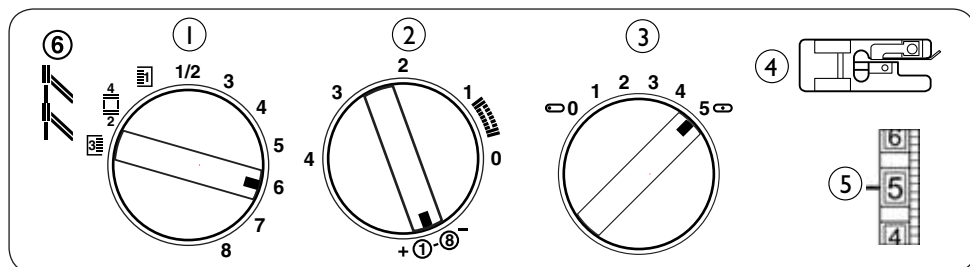


This stitch is used to finish the seam allowance on synthetics and other fabrics that tend to pucker. Also great for overcasting the edges to prevent fraying, sewing elastic, and handy for darning and mending tears.

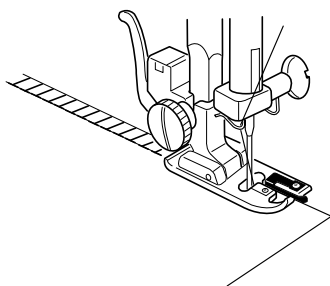
Place your fabric to allow a 1.5 cm (5/8") seam.

Trim the seam allowance after sewing.

Seam/Overcast Stitch (for Model 215)



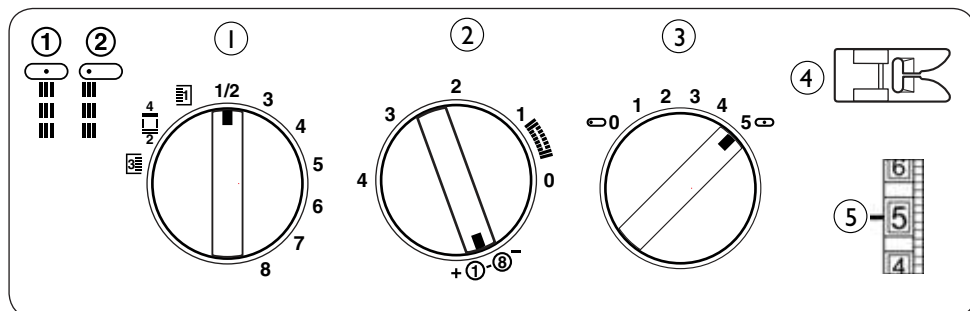
- ① Stitch selector: 6 ② Stitch length: ①-⑧ ③ Stitch width: 5
④ Presser foot: Overcast foot ⑤ Thread tension: 4 - 6



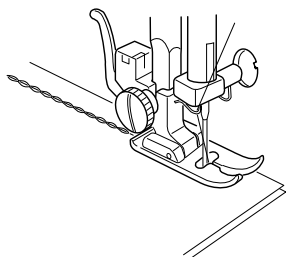
Place the edge of the fabric next to the black guide of the foot as you sew. As the needle falls off the fabric edge, the guide prevents the fabric from curling under, while overcasting the edge of fabric to prevent raveling.

NOTE: Trial sewing is recommended for adjusting the proper tension.

Reinforced Straight Stitch (for Model 215)

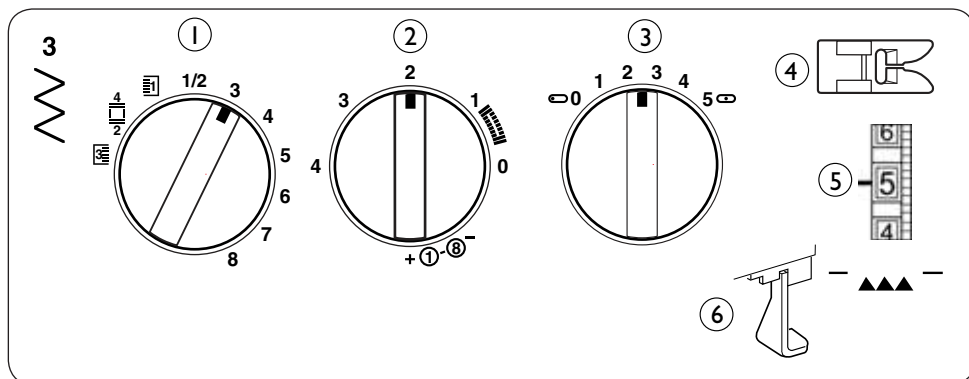


- ① Stitch selector: 1 or 2 ② Stitch length: ①-⑧ ③ Stitch width: 5 or 0
④ Presser foot: Zigzag foot ⑤ Thread tension: 4 - 6



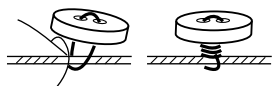
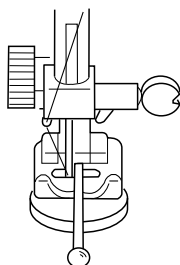
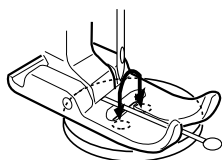
The stitch is sewn with two stitches forward and one stitch backward forming a seam which is durable and strong. Garments should be basted for fitting before seaming. This stitch is ideal for crotch seams.

Sewing Buttons



- ① Stitch selector: 3 ② Stitch length: Set at any number (no fixed setting)
 ③ Stitch width: Adjust the stitch width to match the holes on the button. (Model 215 only)
 ④ Presser foot: Zigzag foot ⑤ Thread tension: 4 - 6 ⑥ Feed teeth: Dropped (See page 16.)

Tape the button over the placement mark. A pin can be taped on top of the foot to form a shank.



- Set the pattern selector at " 2 " for Model 207.
- Set the pattern selector at " 0 " for Model 215.

Align both holes of the button with the slot of the foot and place the left hole of the button just below the needle point.

Lower the foot.

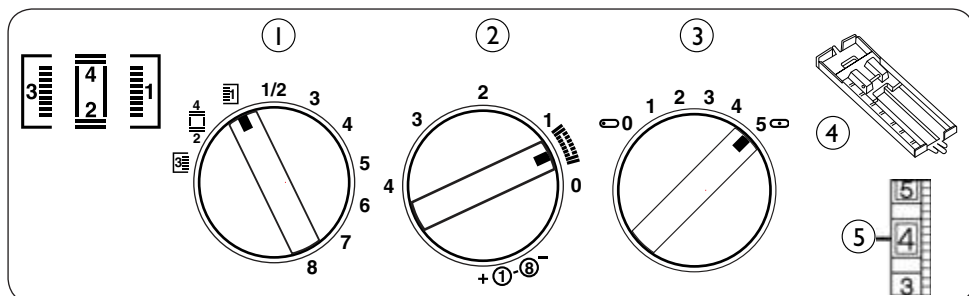
- Turn the **Pattern Selector Dial** for Model 207,
- Turn the **Stitch Width Dial** for Model 215, until the needle point comes just above the right hole of the button.

Sew about five stitches and raise the needle.

To strengthen the shank, cut the threads leaving a 20 cm (8") tail. Bring the needle thread down through the hole in the button and wind it around the shank. Draw the thread to the wrong side and knot.

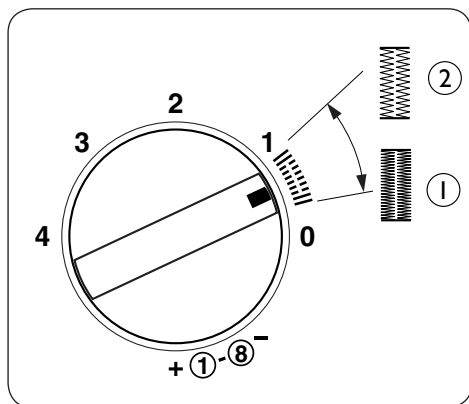
Note: When sewing the button is complete, raise the feed teeth.

Buttonhole



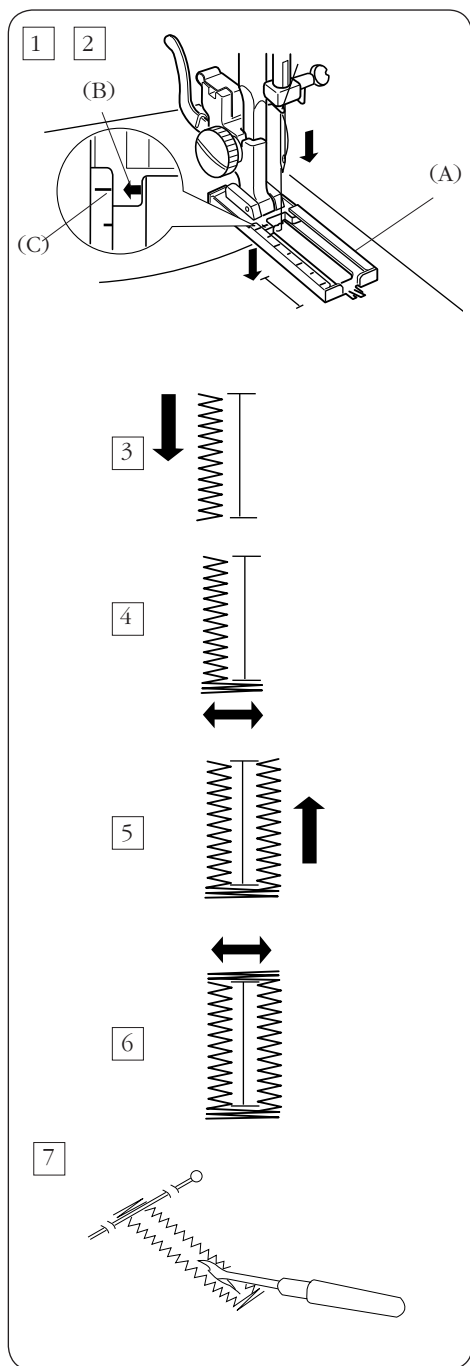
- ① Stitch selector: BH
- ② Stitch length: (0.5 -1)
- ③ Stitch width: 5 (for Model 215)
- ④ Presser foot: Sliding buttonhole foot
- ⑤ Thread tension: 3 - 5

Depending on your preference, you may adjust stitch density within the zone on the stitch length control.



- ① For more density, turn the stitch length control toward "0".
Satin stitches for lightweight fabrics.
- ② For less density, turn the stitch length control toward "1".
Wider spaced stitches for heavyweight fabrics.

NOTE: *Always sew buttonhole on a scrap of fabric first to be sure the adjustment satisfies you.*






- 1 Carefully mark the buttonhole length on the fabric.


Place the fabric under the foot with the buttonhole marking running toward you.

- 2 Move the slider (A) toward you so that the top mark (C) on the slider meets the start mark (B). Line up the markings on the foot with the top mark on the fabric. Lower the presser foot.

NOTE: The markings on the slider are engraved in centimeters.

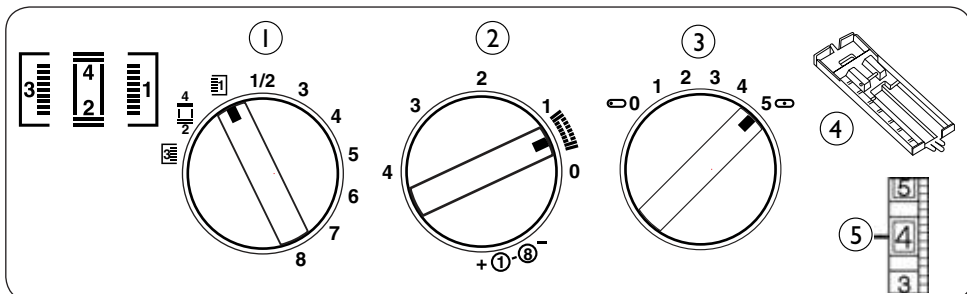
- 3 Set the stitch selector at  . Sew forward until you reach the front marking of your buttonhole. Stop sewing with needle up and to left side.
- 4 Set the stitch selector at  . Sew four (4) to six (6) stitches. Stop sewing with needle up and to right.

- 5 Set the stitch selector at  . Sew until you reach the back marking of the buttonhole. Stop sewing with needle up and to right.

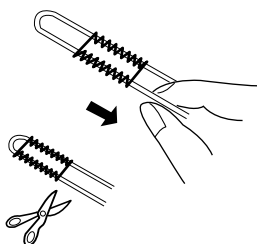
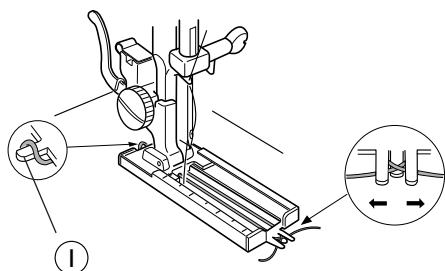
- 6 Set the stitch selector at  . Sew four (4) to six (6) stitches. Stop sewing with needle up and to left.

- 7 When buttonhole sewing is completed, remove the fabric and place a pin on the rear side of the bartack position to prevent accidentally cutting the end of the buttonhole stitch. Carefully cut the opening with the seam ripper.

Corded Buttonhole



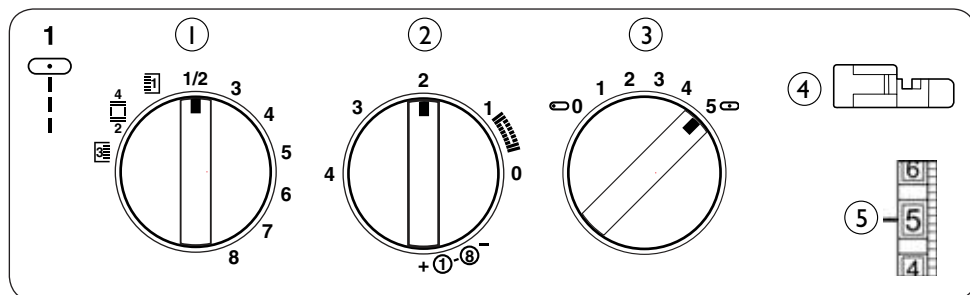
- ① Stitch selector: BH ② Stitch length: (0.5 - 1)
 ③ Stitch width: 5 (for Model 215)
 ④ Presser foot: Sliding buttonhole foot ⑤ Thread tension: 3 - 5



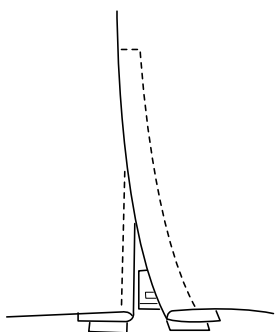
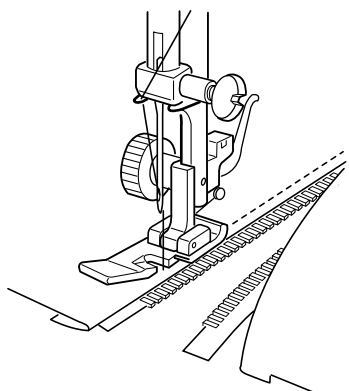
1. With the buttonhole foot raised, hook the cord on the small finger at the back of the buttonhole foot.
 ① finger
2. Bring the ends of the cord toward you and under the buttonhole foot. Lay them in the groove under the center of the foot.
3. Hook the filler cord into the forks on the front of the foot to hold them tight.
4. Lower the needle into the garment where the buttonhole will start and lower the foot.
5. Depress the foot control gently and sew the buttonhole.
 Each side of the buttonhole and the bartacks will be sewn over the cord.
6. Remove the fabric from the machine and cut the sewing threads.
7. Pull the left end of the filler cord to tighten it.
8. Thread the end through a darning needle, draw to the other side of the fabric and cut.

NOTE: To cut the buttonhole opening, refer to the instructions on page 25.

Zipper Sewing



- ① Stitch selector: 1 ② Stitch length: 1.5 - 4
- ③ Stitch width: 5 (for Model 215) ④ Presser foot: Zipper foot
- ⑤ Thread tension: 4 - 6

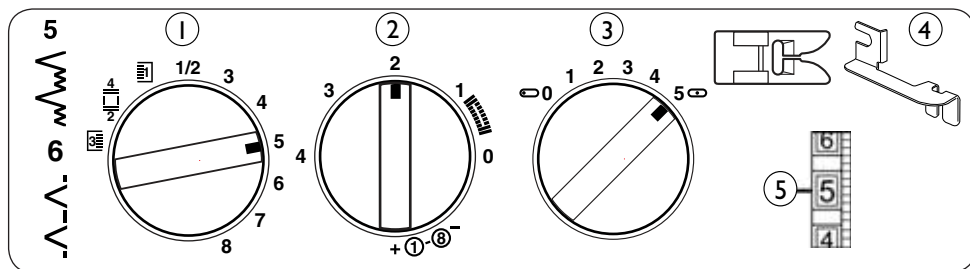


Pin or baste zipper tape to the fabric and place it under the foot. With thread tails toward the back, lower the foot.

To sew the left side of the zipper, guide the edge of the zipper foot along the zipper teeth, stitching through the garment and zipper tape.

Turn the fabric and sew the other side of the zipper in the same way as you did the left side.

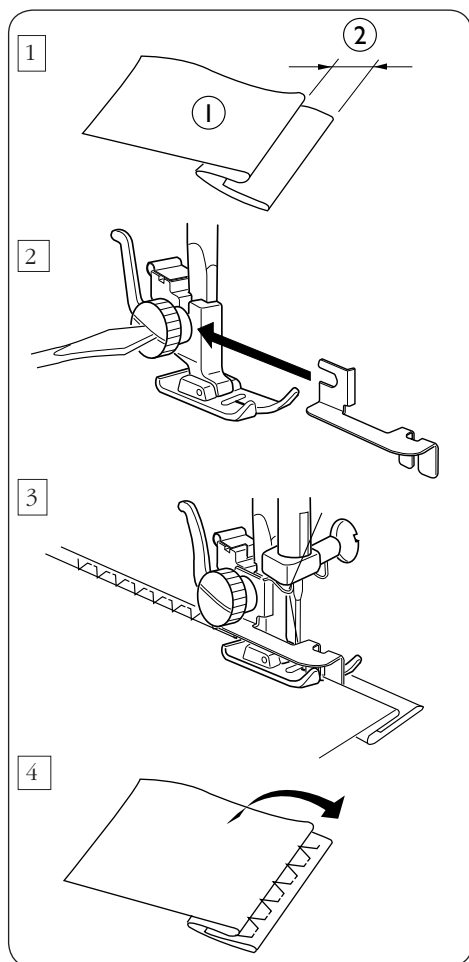
Blind Stitch Hemming



- ① Stitch selector: 5
6 (for Model 207)
- ④ Presser foot: Zigzag foot and Hem guide

- ② Stitch length: 1 - 3
- ③ Stitch width: 5 (for Model 215)
- ⑤ Thread tension: 4 - 6

NOTE: For Model 215, refer to page 14 when selecting stretch titch pattern 6.



- ① How to fold the fabric.

- ① Wrong side of fabric
- ② 0.4-0.7 cm (5/32"-1/4")

- ② Lower the presser foot, then loosen the ankle screw to place the hem guide between the screw and the shank of ankle.

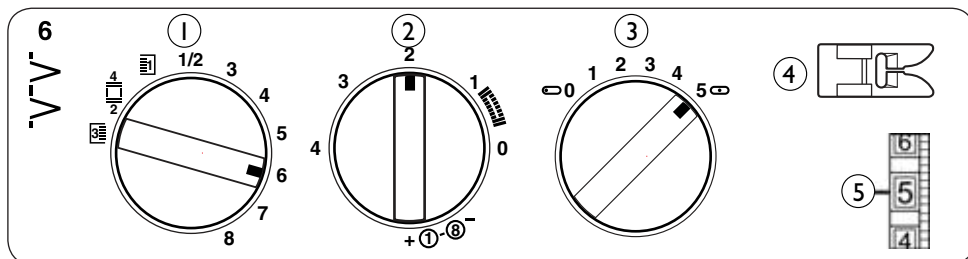
Tighten the screw making sure the wall of the hem guide is placed in the middle of the toes of the presser foot.

- ③ Raise the presser foot and place the fabric under the foot so that the soft fold rests against the wall of the hem guide. Lower the foot and stitch slowly for better control. The left swing of the zigzag stitch should pierce the fold of the hem. While sewing, make sure the fold runs along the wall of the hem guide.

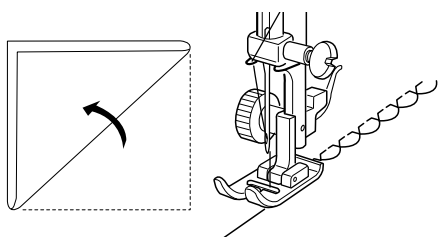
- ④ Open the fabric flat with the right side facing up and press. You should barely be able to see the stitches.

SECTION 5 DECORATIVE STITCHING

Shell Tuck

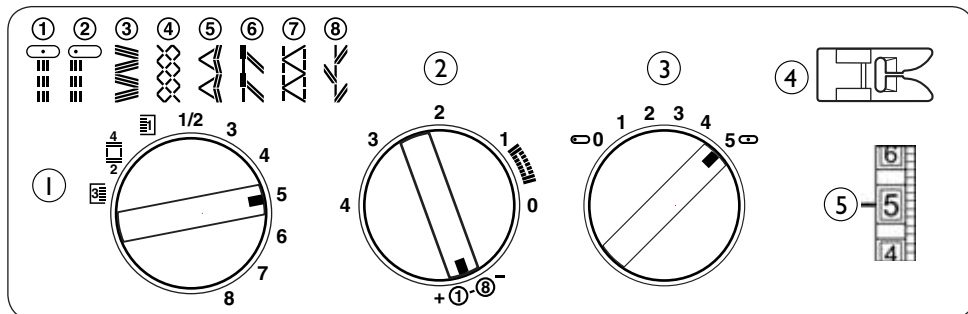


- ① Stitch selector: 6 ("7" for Model 207)
- ② Stitch length: 2
- ③ Stitch width: 5 (for Model 215)
- ④ Presser foot: Zigzag foot
- ⑤ Thread tension: 4 - 8

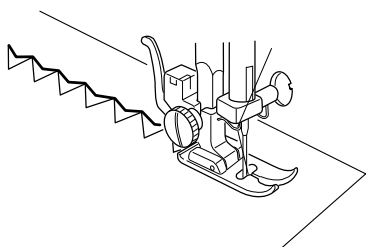


Place the folded edge of fabric along the slot of the foot. The needle should fall off the edge of the fabric on the right, forming a shell tuck.

Stretch Stitch Patterns (for Model 215)

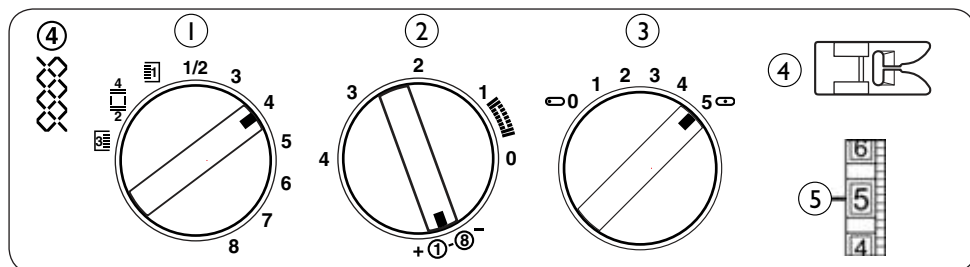


- ① Stitch selector: 1 - 8
- ② Stitch length: ①-⑧
- ③ Stitch width: 5
- ④ Presser foot: Zigzag foot
- ⑤ Thread tension: 2 - 6

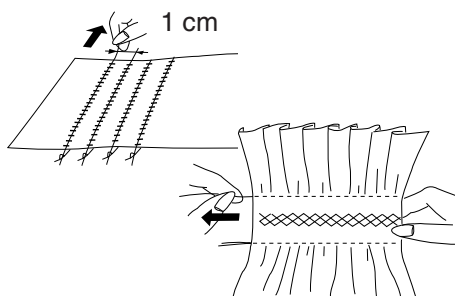


You can balance your stretch stitches by turning the stitch length dial as follows:
 If patterns are dense, turn the dial toward " + ".
 If patterns are sparse, turn the dial toward " - ".

Smocking (for Model 215)



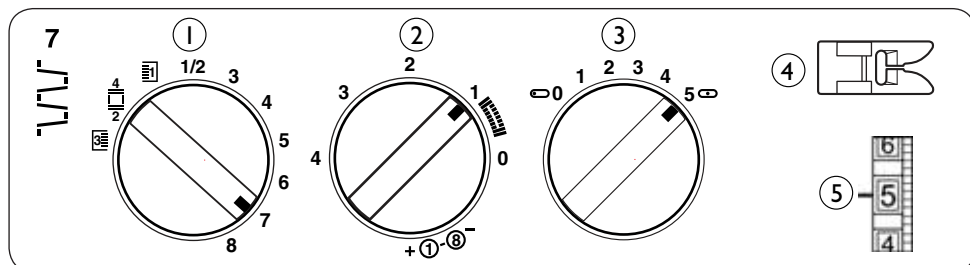
- (1) Stitch selector: 4 (2) Stitch length: 1-8
(3) Stitch width: 5 (4) Presser foot: Zigzag foot (5) Thread tension: 4 - 6



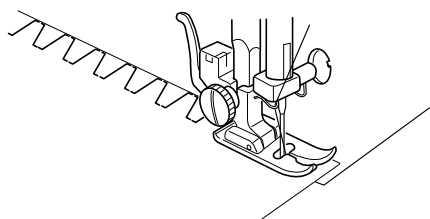
With the stitch selector set at "4", sew straight stitching lines 1 cm (3/8") apart, across the area to be smocked. Knot the threads along one edge. Pull the bobbin threads and distribute the gathers evenly. Secure the threads at the other end. Sew a decorative stitch between the gathering stitches. Pull out the gathering stitches.

NOTE: Loosen the top thread tension to make gathering easier.

Elastic Casing Stitch (for Model 215)

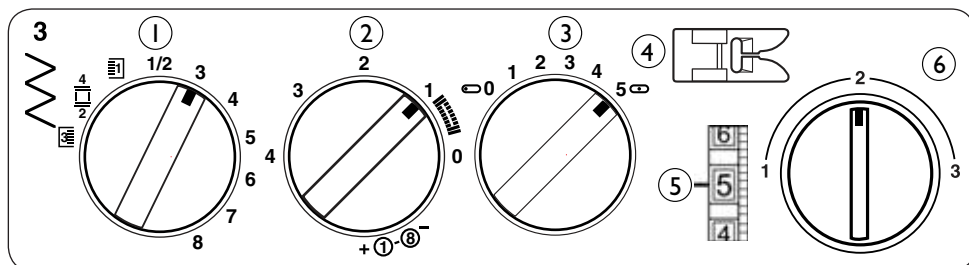


- (1) Stitch selector: 7 (2) Stitch length: 1
(3) Stitch width: 5 (4) Presser foot: Zigzag foot (5) Thread tension: 4 - 6

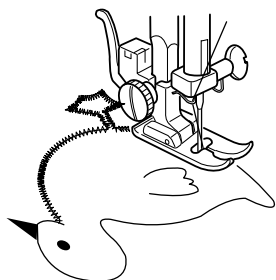


This stitch is ideal for stitching over 1/8" elastic for sleeves in children's wear. Gather up elastic after sewing. Also use this stitch to join heavy weight interlining. Overlap two raw edges together and stitch to join them.

Applique



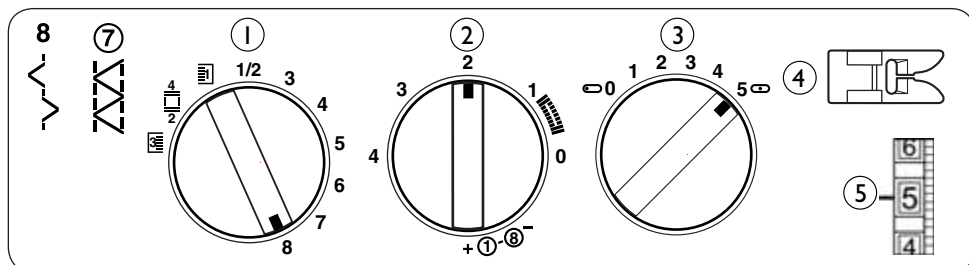
- ① Stitch selector: 3 ② Stitch length: 0.5 - 1 ③ Stitch width: 5 (for Model 215)
 ④ Presser foot: Zigzag foot ⑤ Thread tension: 4 - 6 ⑥ Presser Foot Pressure dial: 2




Baste or fuse with iron-on fusible web, applique pieces onto fabric. Stitch around the applique making sure the needle falls along the outer edge of the applique. When sewing corners, lower the needle down into the fabric, raise the presser foot and pivot the fabric to the right or left.

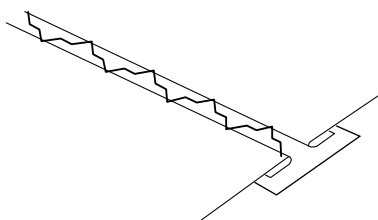
NOTE: After sewing, reset the presser foot pressure dial to "3".

Fagoting (Model 215 only)



- ① Stitch selector: 8 ② Stitch length: 1 - 2
 ③ Stitch width: 5 ④ Presser foot: Zigzag foot ⑤ Thread tension: 4 - 6

NOTE: Pattern  can also be used for fagoting with stitch length set at ①-⑧



Fold under 1.5 cm (5/8") on each fabric edge and press. Pin the two edges to stabilizer 0.3 cm 1/4" apart. Sew slowly, guiding the fabric so the needle catches the folded edge on each side.

SECTION 6 CARE OF YOUR MACHINE

Dismantling and Assembling the Hook Assembly



Turn off the power switch or unplug the machine.

To dismantle the hook assembly:

Raise the needle to its highest position and open the hook cover.

Open the hinged latch of the bobbin case and take it out of the machine.

Open the hook assembly ring holders and remove the hook assembly ring.

Remove the hook.

NOTE: *Clean the hook assembly with a brush and a soft dry cloth.*

- ① Bobbin case
- ② Hook assembly ring holder
- ③ Hook assembly ring
- ④ Hook
- ⑤ Hook assembly

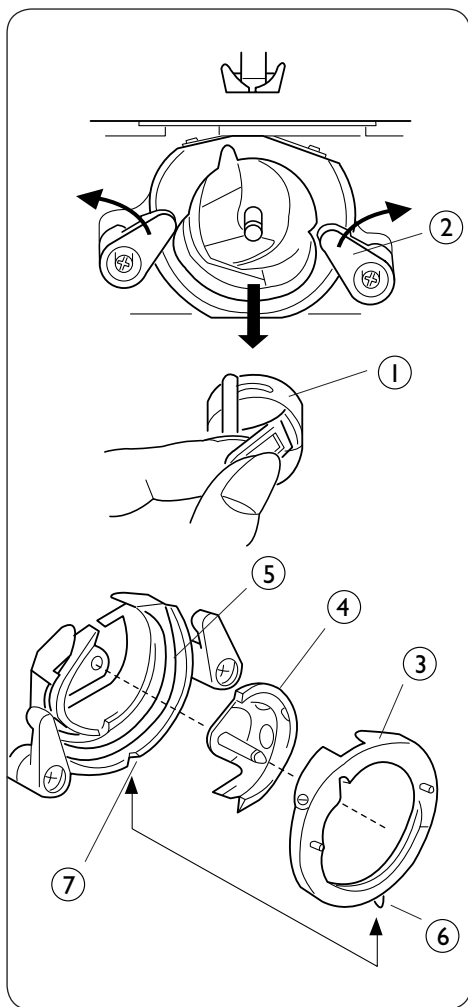
To assemble the hook:

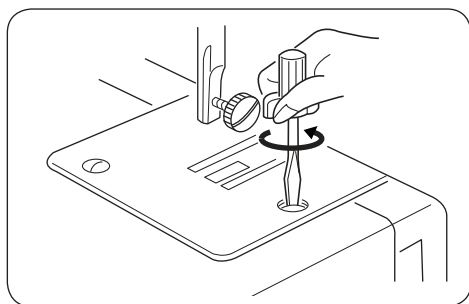
Hold the hook by the center pin and fit it carefully back into the hook assembly, forming a perfect circle with the shuttle driver.

Attach the hook assembly ring, making sure the bottom pin fits into the notch.

Lock the hook assembly ring by turning the holders back into position. Insert the bobbin case.

- ⑥ Pin
- ⑦ Notch



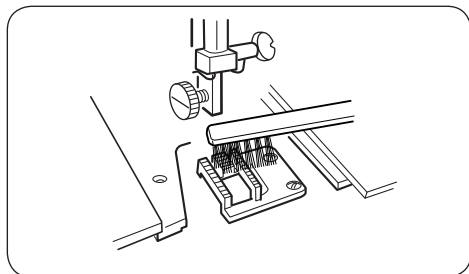


Cleaning the Feed Teeth



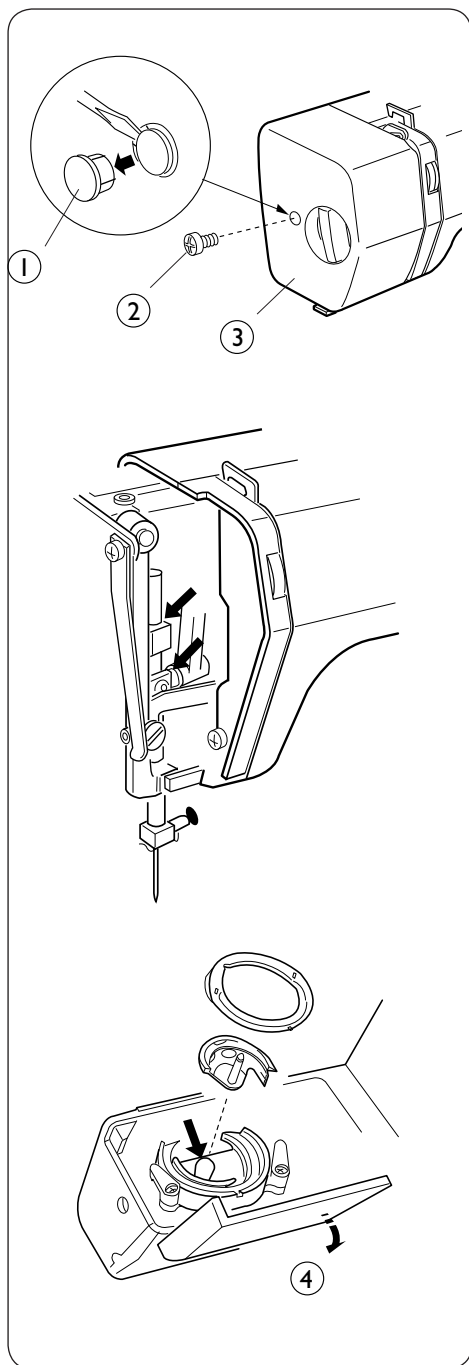
Turn off the power switch or unplug the machine before cleaning the feed teeth.

Remove the needle and the presser foot.
Remove the needle plate set screw and
remove the needle plate.



With a brush, clean out dust and lint clog-
ging the feed teeth.
Reattach the needle plate, snap on presser
foot and you're ready to sew.

NOTE: *Clean your machine after each project for best
results.*



Oiling the Machine



Turn off the power switch or unplug the machine.

Oil the 2 points as illustrated at least once a year. Use good quality sewing machine oil. One or two drops of oil is sufficient. Remove excess oil, otherwise it may stain fabric. If the machine has not been used for an extended time, or if used frequently, oil it before sewing.

Oil behind the face plate

Remove the cap, screw and face plate. Oil the point indicated in the illustration.

- ① Cap
- ② Screw
- ③ Face plate

Oiling the shuttle hook area

Open the hook cover by pulling down the embossed part on the left side of the cover. Oil the point indicated in the illustration.

- ④ Hook cover

Troubleshooting

Condition	Cause	Reference
The needle thread breaks.	<ol style="list-style-type: none"> 1. The needle thread is not threaded properly. 2. The needle thread tension is too tight. 3. The needle is bent or blunt. 4. The needle is incorrectly inserted. 5. The fabric is not being drawn to the back when sewing is finished. 6. The thread is either too heavy or too fine for the needle. 	<p>See page 11</p> <p>See page 13</p> <p>See page 7</p> <p>See page 7</p> <p>See page 17</p> <p>See page 7</p>
The bobbin thread breaks.	<ol style="list-style-type: none"> 1. The bobbin thread is not threaded properly in the bobbin case. 2. Lint has collected in the bobbin case. 3. The bobbin is damaged and doesn't turn smoothly. 	<p>See page 10</p> <p>Clean the bobbin case.</p> <p>Exchange bobbin.</p>
The needle breaks.	<ol style="list-style-type: none"> 1. The needle is incorrectly inserted. 2. The needle is bent or blunt. 3. The needle clamp screw is loose. 4. The tension of the needle thread is too tight. 5. The fabric is not drawn to the back when sewing is finished. 6. The needle is too fine for the fabric being sewn. 7. The pattern selector dial had been turned while the needle was in the material. 	<p>See page 7</p> <p>See page 7</p> <p>See page 7</p> <p>See page 13</p> <p>See page 17</p> <p>See page 7</p> <p>See page 14</p>
Skipped stitches	<ol style="list-style-type: none"> 1. The needle is incorrectly inserted. 2. The needle is bent or blunt. 3. The needle and/or threads are not suitable for the work being sewn. 5. The needle thread is not threaded properly. 	<p>See page 7</p> <p>See page 7</p> <p>See page 7</p> <p>See page 11</p>

Condition	Cause	Reference
Seam puckering	<ol style="list-style-type: none"> 1. The needle thread tension is too tight. 2. The machine is not threaded correctly. 3. The needle is too heavy for the fabric being sewn. 4. The stitches are too sparse for the fabric being sewn. <p>* When sewing extremely light weight materials, place stabilizer underneath the fabric.</p>	<p>See page 13 See page 11 See page 7</p> <p>See page 29</p>
Stitches form loops below the work.	<ol style="list-style-type: none"> 1. The needle thread tension is too loose. 2. The needle is either too heavy or too fine for the thread. 	<p>See page 13 See page 7</p>
The fabric is not feeding smoothly.	<ol style="list-style-type: none"> 1. The feed teeth are packed with lint. 2. The feed teeth are in the down position. 3. The stitches are too fine. 	<p>See page 33 See page 16 See page 29</p>
The machine does not work.	<ol style="list-style-type: none"> 1. The machine is not plugged in. 2. Thread is caught in the hook assembly. 3. The handwheel has been disengaged for bobbin winding. 	<p>See page 5 See page 32 See page 9</p>
The machine does not run smoothly and is noisy.	<ol style="list-style-type: none"> 1. Threads have been caught in the hook mechanism. 2. The feed teeth are packed with lint. 3. The machine needs to be oiled. 	<p>See page 32</p> <p>See page 33 See page 34</p>

We reserve the right to change the machine equipment and the assortment of accessories without prior notice, or make modifications to the performance or design. Such modifications, however, will always be to the benefit of the user and the product.



Please note that on disposal, this product must be safely recycled in accordance with relevant National legislation relating to electrical/electronic products. If in doubt please contact your retailer for guidance.

