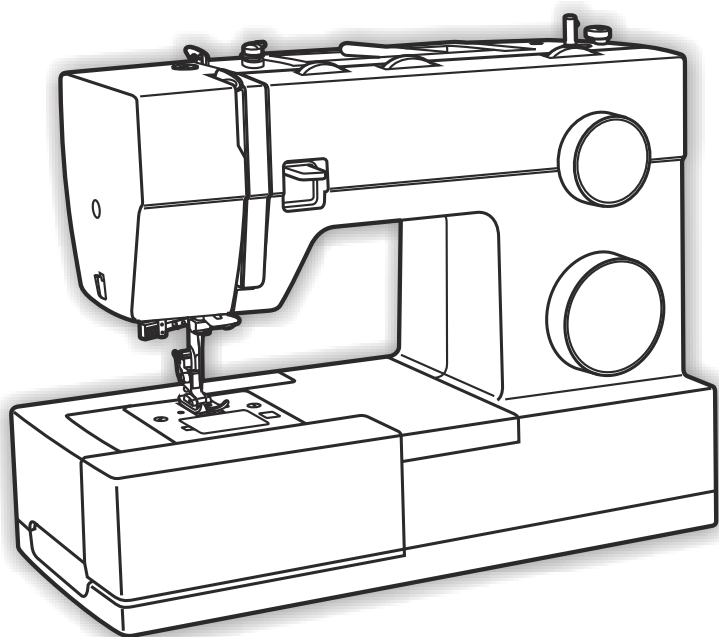




**SINGER®**



**INSTRUCTION MANUAL**

**44S**

***SINGER is sewing made easy.™***

# INTRODUCTION

## Welcome

Welcome to the **SINGER**<sup>®</sup> family and CONGRATULATIONS on purchasing a brand new **SINGER**<sup>®</sup> sewing machine!

The **SINGER**<sup>®</sup> brand has stood for quality in sewing for over 160 years. We design our machines for sewists of all skill levels so that the joy of sewing, creating, do-it-yourself, crafting and more can be enjoyed by all.

We're ready to help and hope that you enjoy your **SINGER**<sup>®</sup> sewing machine.

Happy Sewing!

### IMPORTANT SAFETY INSTRUCTIONS

Read all instructions before using this household sewing machine.

When using an electrical appliance, basic safety precautions should always be followed, including the following:

Keep the instructions at a suitable place close to the machine. Make sure to hand them over if the machine is given to a third party.

This appliance is intended for use by adults. The appliance can be used with adult supervision by (i) children aged from 8 to 12 years and (ii) persons with reduced physical, sensory or mental capabilities or lack of experience and knowledge if they have been given instruction concerning use of the appliance in a safe way and understand the hazards involved. Cleaning and user maintenance shall not be made by children without supervision. It is not allowed for anyone to play with the machine. Children up to 8 years are not allowed to use the machine.

### **WARNING – TO REDUCE THE RISK OF BURNS, FIRE, ELECTRIC SHOCK, OR INJURY TO PERSON:**

- A sewing machine should never be left unattended when plugged in. The electrical socket, to which the machine is plugged in should be easily accessible. Always unplug this sewing machine from the electric outlet immediately after using and before cleaning, removing covers, lubricating or when making any other user servicing adjustments mentioned in the instruction manual.
- Do not allow to be used as a toy. Close attention is necessary when this sewing machine is used by or near children.
- Use this sewing machine only for its intended use as described in this manual. Use only attachments recommended by the manufacturer as contained in this manual.
- Never operate this sewing machine if it has a damaged cord or plug, if it is not working properly, if it has been dropped or damaged, or dropped into water. Return the sewing machine to the nearest authorized dealer or service center for examination, repair, electrical or mechanical adjustment.
- Never operate the sewing machine with any air openings blocked. Keep ventilation openings of the sewing machine and foot control free from the accumulation of lint, dust, and loose cloth.
- Keep fingers away from all moving parts. Special care is required around the sewing machine needle.
- Always use the proper needle plate. The wrong plate can cause the needle to break.
- Do not use bent needles.
- Do not pull or push fabric while stitching. It may deflect the needle causing it to break.

# INTRODUCTION

## Important Safety Instructions

- Wear safety glasses.
- Switch the sewing machine off (“0”) when making any adjustment in the needle area, such as threading needle, changing needle, threading bobbin, or changing presser foot, etc.
- Never drop or insert any object into any opening.
- Do not use outdoors.
- Do not operate where aerosol (spray) products are being used or where oxygen is being administered.
- To disconnect, turn all controls to the off (“0”) position, then remove plug from outlet.
- Do not unplug by pulling on cord. To unplug, grasp the plug, not the cord.
- The foot control is used to operate the machine. Never place other objects on the foot control.
- Do not use the machine if it is wet.
- If the LED lamp is damaged or broken, it must be replaced by the manufacturer or its service agent or a similarly qualified person, in order to avoid a hazard.
- If the cord connected with the foot control is damaged, it must be replaced by the manufacturer or its service agent or a similarly qualified person, in order to avoid a hazard.
- The noise level under normal operating conditions is less than 75dB(A).
- The machine must only be used with foot control of type FC-1902A(110-120V area) / FC-2902A, FC-2902C, FC-2902D(220-240V area) manufactured by ZHEJIANG FOUNDER MOTOR CORPORATION LTD. (China)

## SAVE THESE INSTRUCTIONS

## **SERVICING OF DOUBLE INSULATED PRODUCTS**


In a double-insulated product, two systems of insulation are provided instead of grounding. No ground means is provided on a double-insulated product, nor should a means for grounding be added to the product. Servicing of a double-insulated product requires extreme care and knowledge of the system and should be done only by qualified service personnel. Replacement parts for a double-insulated product must be identical to those parts in the product. A double-insulated product is marked with the words “DOUBLE INSULATION” or “DOUBLE INSULATED”.

# INTRODUCTION


## Table of Contents

<b>INTRODUCTION .....</b>	<b>2-6</b>
Welcome .....	2
Important Safety Instructions .....	3-5
Table of Contents .....	6
<b>ABOUT YOUR MACHINE.....</b>	<b>7-10</b>
Main Parts of the Machine Front.....	7
Main Parts of the Machine Back .....	8
Needle and Presser Foot Area.....	9
Removable Storage Compartment and Accessories .....	10
<b>GETTING READY TO SEW .....</b>	<b>11-16</b>
Powering Your Machine .....	11
Winding the Bobbin.....	12
Inserting the Bobbin .....	13
Threading the Upper Thread.....	14
Automatic Needle Threader .....	15
Drawing Up the Bobbin Thread.....	16
<b>START SEWING .....</b>	<b>17-26</b>
Before You Start Sewing .....	17
Stitch Formation .....	18
Stitch Selector Dial.....	19
Sewing a Straight Stitch.....	20
Sewing a Decorative Stitch .....	21
Sewing a Stretch Stitch.....	22
Sewing a 1-Step Buttonhole.....	23
Sewing a Button.....	24
Inserting and Changing Needles.....	25
Changing the Presser Foot .....	26
Needle Position Dial .....	26
Left and Right Side Balance for Buttonhole .....	26
<b>TROUBLESHOOTING AND MAINTENANCE.....</b>	<b>27-32</b>
Troubleshooting .....	27-31
Maintenance.....	32
<b>APPENDIX - GLOSSARY .....</b>	<b>33</b>
Glossary of Key Sewing Terms .....	33

*Explanation key to notations in this manual:*

 = Helpful information

 = Could cause harm

 = Impacts sewing results

To ensure that you are always provided with the most modern sewing capabilities, the manufacturer reserves the right to change appearance, design or accessories of this sewing machine when considered necessary.

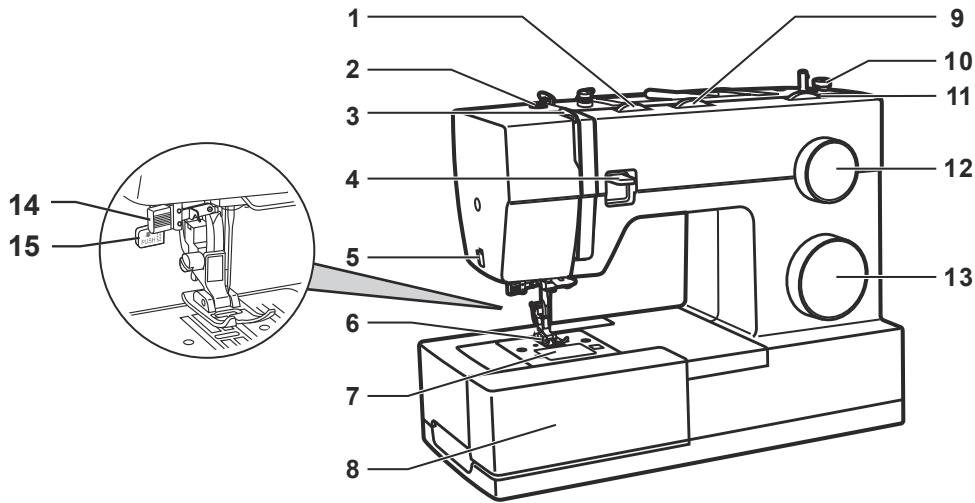
**SINGER®** & Singer is Sewing Made Easy is a registered trademark of The **SINGER®** Company Limited or its affiliates.

© 2016 The **SINGER®** Company Limited or its affiliates. All rights reserved.

# ABOUT YOUR MACHINE

## Main Parts of the Machine Front

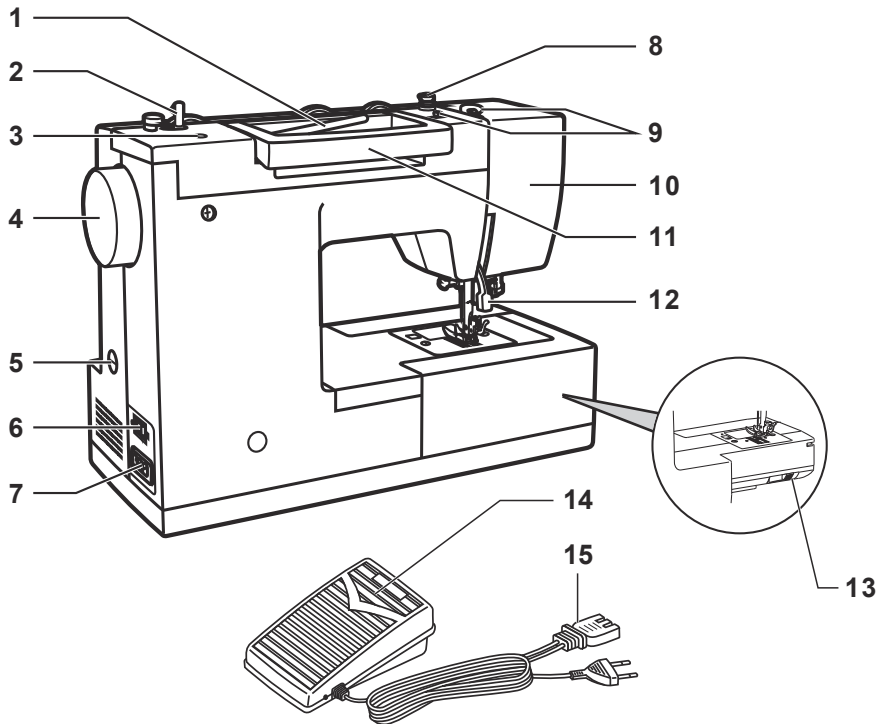
1



1. **THREAD TENSION DIAL** allows you to select just the right tension for your stitch, thread and fabric. (See Page 18)
2. **PRESSER FOOT PRESSURE** is preset at the factory for light and heavy fabrics. Decrease by 1/4 turn for very thin fabric & increase by 1/4 turn for very heavy fabric if needed. Make sure to reset to the factory setting when project is completed.
3. **THREAD TAKE-UP LEVER** controls the flow of the upper thread while sewing. (See Page 14)
4. **REVERSE SEWING LEVER** reverses stitching direction, for example, when securing the beginning and ending of a seam. (See Page 20)
5. **THREAD CUTTER** is conveniently located for trimming thread ends at the end of sewing.
6. **PRESSER FOOT** holds fabric against feed teeth, drawing fabric under the foot for you as you sew. (See Page 26)
7. **NEEDLE PLATE** has guidelines to help you keep seams straight. (See Page 9)
8. **REMOVABLE STORAGE COMPARTMENT** provides flat surface for sewing, storage for accessories, and provides access to the free arm. (See Page 10)
9. **NEEDLE POSITION DIAL** controls the needle positioning. For normal sewing select center position. For edge stitching select the left or right needle position. (See page 26)
10. **BOBBIN WINDING STOPPER** determines when bobbin is full and disengages automatically. (See Page 12)
11. **STITCH WIDTH DIAL** controls the width of stitches, making them narrower or wider. (See page 19)
12. **STITCH LENGTH DIAL** controls the length of stitches, making them shorter or longer as desired. It is also used for stretch stitch length selection. (See Page 19)
13. **STITCH SELECTOR DIAL** is used to select stitch patterns and buttonhole settings. (See Page 19)
14. **NEEDLE THREADER LEVER** is used to engage the automatic needle threader. (See Page 15)
15. **ONE STEP BUTTONHOLE LEVER** automatically determines the length of the buttonhole when lowered. (See Page 23)

# ABOUT YOUR MACHINE

## Main Parts of the Machine Back



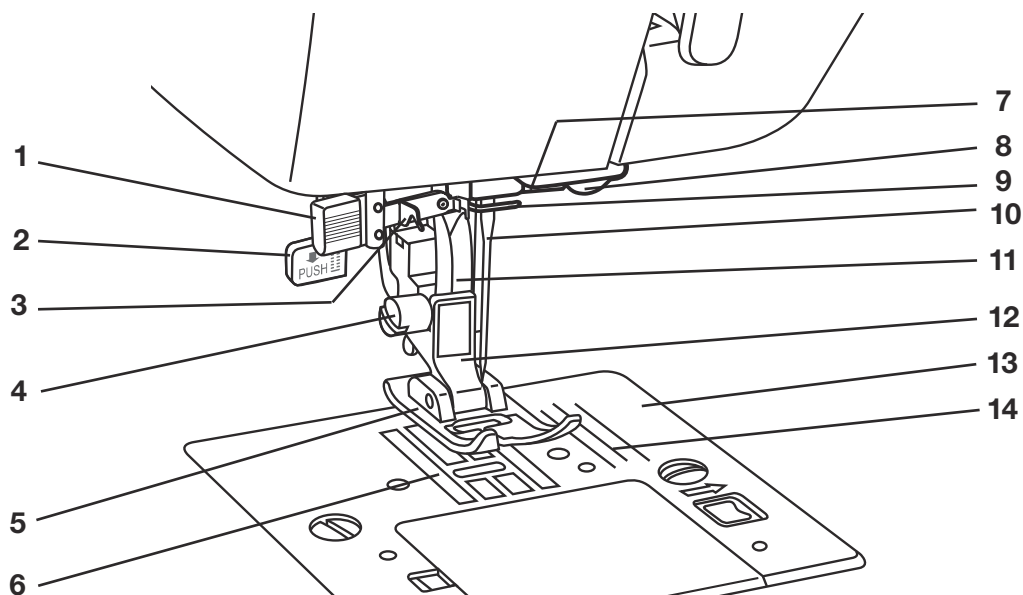
1. **HORIZONTAL SPOOL PIN** holds the thread spool and spool cap for the upper thread.
2. **BOBBIN WINDING SPINDLE** holds bobbin as it winds. (See Page 12)
3. **HOLE FOR SECOND SPOOL PIN** is used to hold an additional spool pin (optional), for thread spools to be used in upright position or for using two spools at once for twin needle sewing.
4. **HANDWHEEL (ALWAYS TURN IT TOWARD YOU)**, controls movement of the needle and the thread take-up lever.
5. **BUTTONHOLE STITCH BALANCE ADJUSTMENT SLOT** controls the stitch density of the buttonhole. (See page 26)
6. **POWER AND LIGHT SWITCH** turns on machine and sewing light simultaneously. (See Page 11)
7. **MAIN PLUG SOCKET** is used to connect the power cord/foot control. (See Page 11)
8. **BOBBIN WINDING TENSION DISK** holds the thread snugly to help ensure smooth and even bobbin winding. (See Page 12)
9. **PRE-TENSION THREAD GUIDE** helps maintain the flow of the thread during sewing. (See Page 14)
10. **FACE PLATE** houses and protects the interior mechanisms of the machine.
11. **HANDLE** is used for lifting and transporting the machine.
12. **PRESSER FOOT LIFTER** raises and lowers presser foot. It should be placed up for machine threading and down for sewing. (See Page 14)
13. **DROP FEED CONTROL LEVER** controls the dropping or raising of the feed teeth.
14. **FOOT CONTROL** controls sewing speed by the amount of pressure applied by user. (See Page 11)
15. **POWER CORD** connects the machine to the power source. (See Page 11)



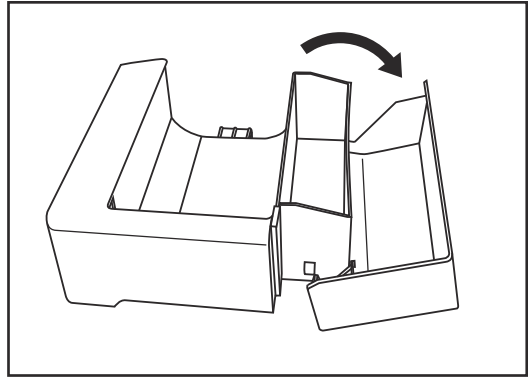
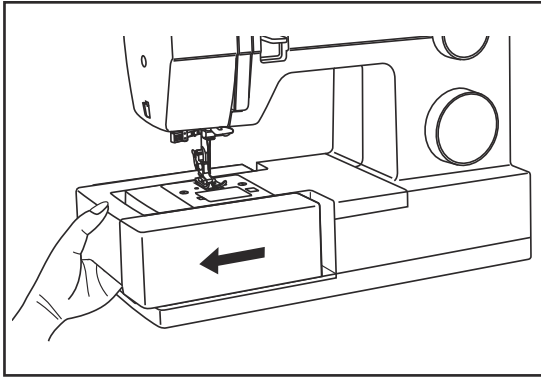
# ABOUT YOUR MACHINE

## Needle and Presser Foot Area

1



1. **NEEDLE THREADER LEVER** is used to engage the automatic needle threader mechanism.
2. **ONE STEP BUTTONHOLE LEVER** automatically determines the length of the buttonhole when lowered. (See page 23)
3. **NEEDLE THREADER GUIDE** holds thread securely before placing it in hook pin.
4. **PRESSER FOOT SCREW** secures the presser foot holder (shank) onto the presser bar.
5. **PRESSER FOOT** holds fabric against the feed teeth while sewing. Various optional presser feet are available, depending on fabric sewn and sewing techniques. (see page 10)
6. **FEED TEETH (OR FEED DOGS)**, which look like rows of teeth under the presser foot, control the movement of the fabric under the presser foot.
7. **NEEDLE CLAMP** holds the machine's needle in position.
8. **NEEDLE CLAMP SCREW** secures the needle when placed in needle clamp.
9. **THREAD GUIDE** controls movement of upper thread.
10. **NEEDLE** holds thread during stitch formation.
11. **PRESSER BAR** accommodates the presser foot holder.
12. **PRESSER FOOT HOLDER (OR SHANK)** holds presser foot.
13. **NEEDLE PLATE** covers the bobbin area and provides flat area around presser foot for sewing.
14. **STITCHING GUIDELINES** are used as a visual reference for guiding fabric straight while sewing. The first line is 3/8" (10mm) from center needle position. The most popular seam allowance measurements are 1/2" (13mm) and 5/8" (16mm). The 1/2" seam allowance is the 2nd line, and the 5/8" seam allowance is the 3rd line from center needle position.



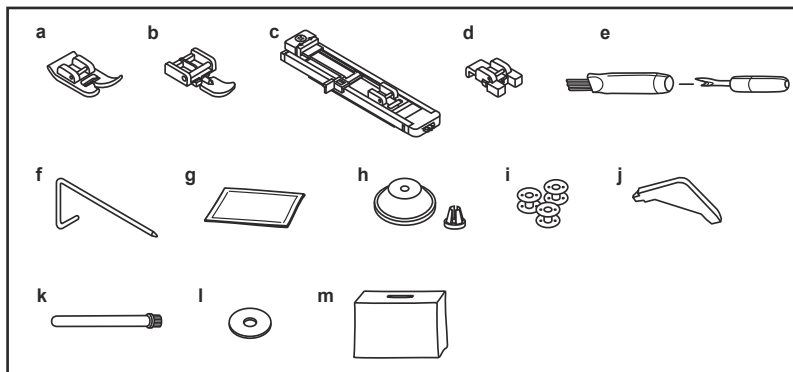
Hold the Removable Storage Compartment horizontally, then pull toward the left to remove it from the machine. Doing this, you will have access to the free arm, which makes it easy to sew tubular projects like pant hems or sleeves. Additionally, you will find the machine's accessories stored here (see below).

To replace the Removable Storage Compartment, hold it as shown in the illustration, and then push it to the right.

This machine comes with a standard assortment of presser feet and accessories.

### Standard Accessories Included:

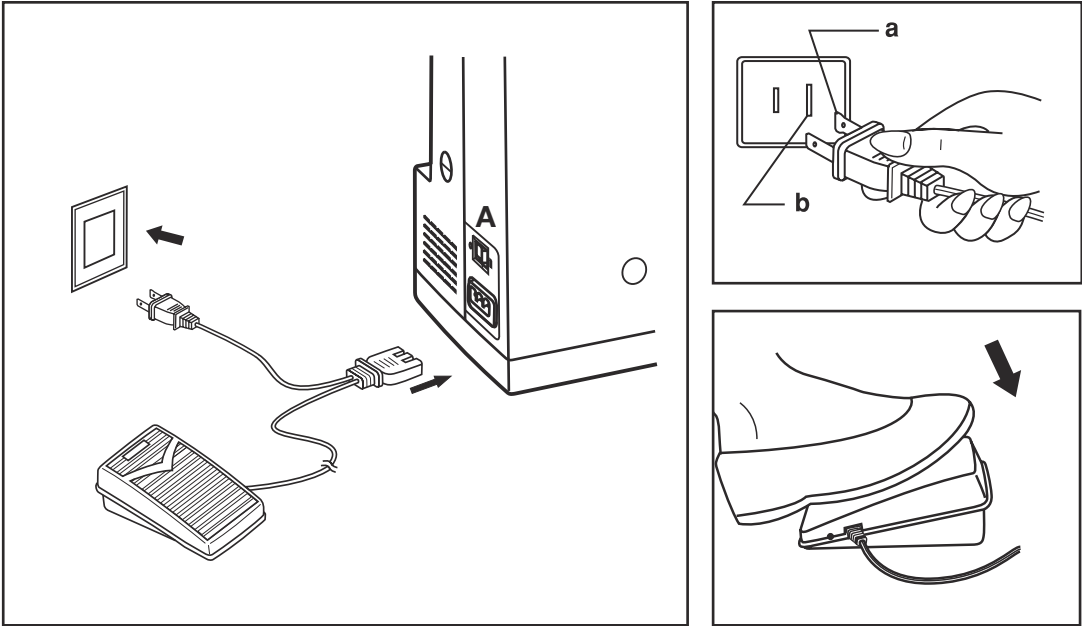
- a. All Purpose Foot (for general sewing)
- b. Zipper Foot (for inserting a zipper)
- c. Buttonhole Foot (for making buttonholes)
- d. Button Sewing Foot (for attaching buttons)
- e. Seam Ripper/Brush (remove stitches/brush out lint)
- f. Edge/Quilting guide (for straight and accurate quilting)
- g. Pack of Needles (replacement needles)
- h. Spool Holders (2 sizes for various thread spool styles)
- i. Bobbins (**SINGER**® Class 15 transparent bobbins)
- j. L-Screwdriver (to remove needle plate for cleaning)
- k. Darning Plate (cover for feed teeth)
- l. Second Spool Pin (for sewing with an optional twin needle)
- m. Spool Pin Felt (to cushion the spool of thread when using the second spool pin)
- n. Soft Cover (to protect your machine from dust and lint while not in use)



### Optional Accessories:

For information about additional presser feet, attachments and accessories that may be available for your machine, visit [www.singerco.com](http://www.singerco.com)

## Powering Your Machine



Connect the machine to a power source as illustrated. This machine is equipped with a polarized plug which must be used with the appropriate polarized outlet. (a and b)

⚠ Unplug power cord when machine is not in use.

#### Foot Control

The foot control regulates the sewing speed. When foot control is disconnected, the machine will not operate.

#### Sewing Light

Press main switch (A) to "1" for power and light.

⚠ For machine with a polarized plug (one blade is wider than the other). To reduce the risk of electric shock, this plug is intended to fit in a polarized outlet only one way. If it does not fit fully in the outlet, reverse the plug. If it still does not fit, contact a qualified electrician to install the proper outlet. Do not modify the plug in any way.

⚠ Your **SINGER**® machine is adjusted to provide the best stitch results at normal room temperature. Extreme hot and cold temperatures can affect the sewing results.

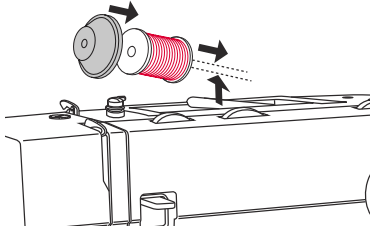
## Winding the Bobbin



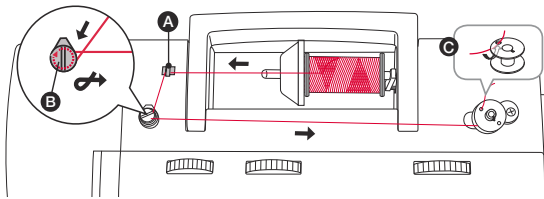
This machine uses **SINGER®** Class 15 transparent bobbins.

Use only this style of bobbin when purchasing additional bobbins for your machine. Do not substitute with metal bobbins.

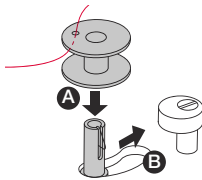
1.



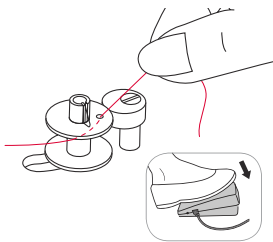
- Place thread spool and corresponding size spool holder onto spool pin. Spool holder should be large enough to cover the end of the thread spool so thread unreels smoothly. For smaller, narrower spools, use the small spool cap, which can be found in the removable storage compartment.



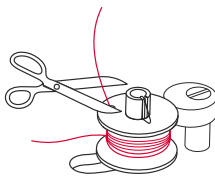
- (A) Snap thread into guide at top of machine. (B) Place thread snugly around bobbin winding tension disk to ensure that thread winds onto bobbin smoothly and consistently. (C) Thread bobbin as shown, then place it onto the bobbin winding spindle.



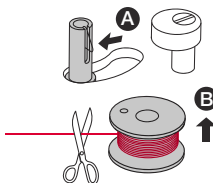
- Check that bobbin is pushed down firmly (A). If it is not, the thread could begin winding under the bobbin. Push the bobbin and spindle firmly to the right (B).




- Hold the thread end to get ready to wind. Step on the foot controller gently as you hold the thread end. Allow it to wind a few revolutions slowly, then remove your foot from the foot control to stop.

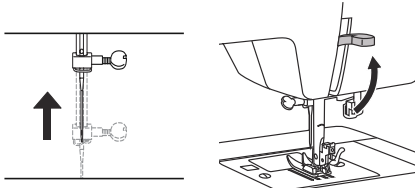


- Trim the thread end close to the top of the bobbin, then resume winding by stepping on the foot controller.

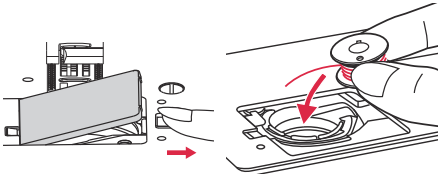


- The bobbin will stop winding when it is full. Lift your foot off the foot control. Push the bobbin to the left (A), then trim the thread and remove the bobbin from the spindle (B).

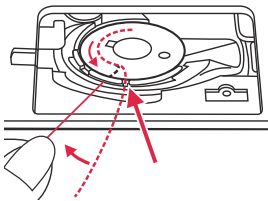
 Turn power switch off before inserting or removing the bobbin.



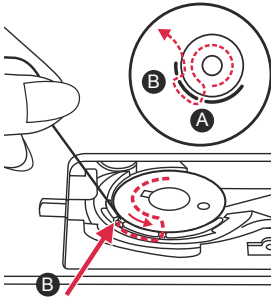
1. When inserting or removing the bobbin, the needle and presser foot must be fully raised.



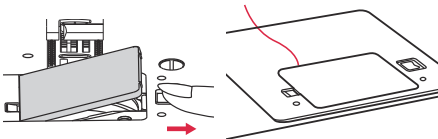
2. Remove bobbin cover plate. Remove empty bobbin from bobbin case and insert wound bobbin.



3. With the thread running in a counterclockwise direction (see arrow), slip thread into notch at the front as shown.



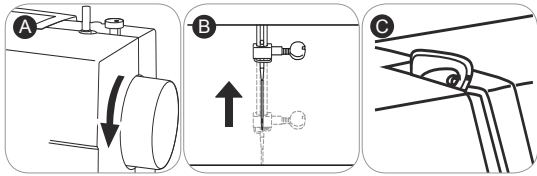
4. While holding the bobbin down with the tip of your finger, pull the thread firmly through the slit (A). Draw the thread clockwise until it slips into the notch (B).



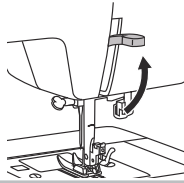
5. Pull about 6-8 inches of thread toward the back of the needle plate and attach the bobbin cover plate.


## Threading the Upper Thread

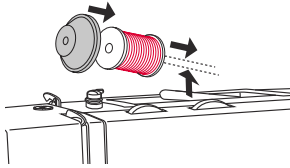
 For safety, turn off the power before threading the machine.



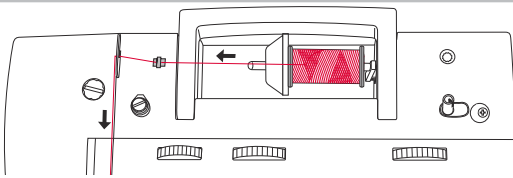
1. Start by turning the handwheel (A) toward you to raise the needle (B) and the thread take up lever (C). You should be able to see the take up lever.



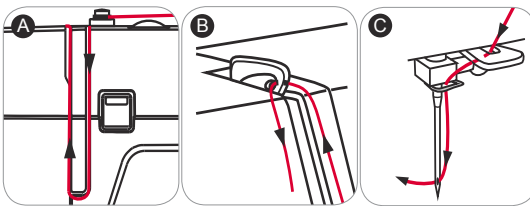
2.  **Raise the presser foot lifter.** This is necessary in order for the machine to be threaded correctly.



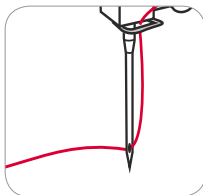
3. Place the thread spool and spool cap onto the spool holder.



4. Draw thread from the spool through the upper thread guide at the top of the machine. Hold the thread with both hands and pull it into the pre-tension guide.



5. (A) Bring the thread down the right channel, around the U-turn, and up the left channel. (B) At the top of the left channel, hook the thread from back to front through the slotted eye of the thread take-up lever. If the thread does not pass into the eye of the take-up lever, the machine will jam. After threading the take-up lever, bring the thread downward again. (C) Pass the thread behind the metal thread guide and then down to the needle.




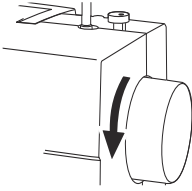
6. If you want to thread the needle manually, thread it from front to back. Pull about 6-8 inches of thread to the back beyond the needle eye. Alternatively, you can use the automatic needle threader to thread the eye of the needle. (see page 15)

# GETTING READY TO SEW

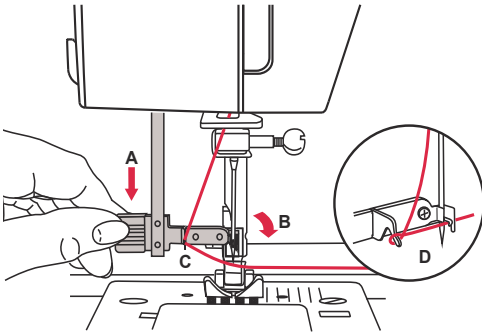
## Automatic Needle Threader

2

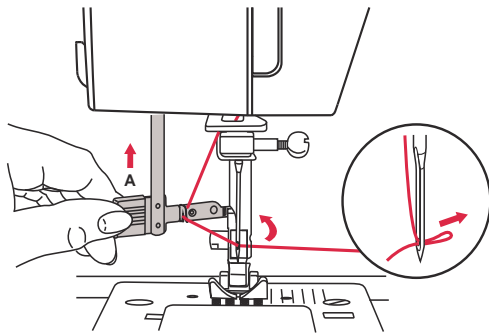
 For safety, turn off the power before using the automatic needle threader.



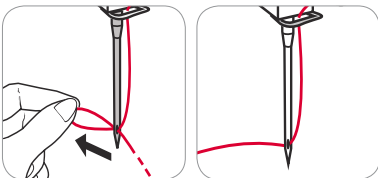
1. **Raise the needle to its highest position by turning the handwheel toward you.** If you turn the handwheel backward, the machine will jam when you start to sew.




2. Press lever (A) as far down as it will go. Insert the hook of the threader into the eye of the needle by gently pushing the lever to the back.
3. The threader automatically swings to the threading position (B).
4. Pass the thread under thread Guide (C) from left to right and then pass the thread in front of the needle and under the hook (D).




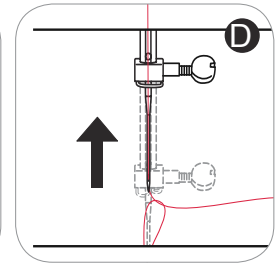
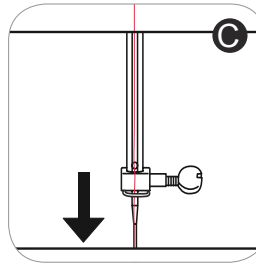
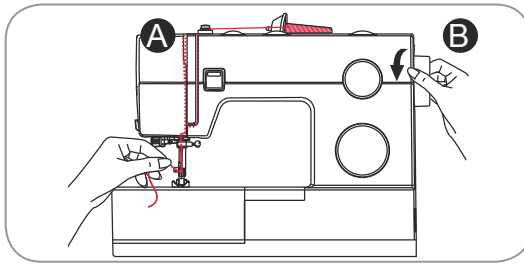
5. Holding the thread gently with your right hand, release the lever (A), by swinging it toward you and back up. This will form a loop at the back of the needle.



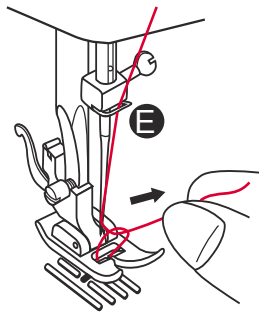
6. Pull the thread through the needle eye.

 Pull about 6-8" of thread to the back beyond the eye of the needle. This will help prevent the needle from becoming unthreaded when you start to sew.

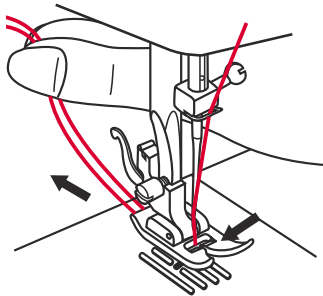
 For safety, turn off the power before threading the machine.



1. Hold the upper thread tail with the left hand (A). Turn the handwheel toward you (B), first lowering (C) and then raising the needle (D).



2. As you turn the handwheel, gently pull the upper thread, which will bring a loop of the bobbin thread up through the hole of the needle plate (E). Pull the loop to bring the bobbin thread end up through the opening in the needle plate. If a loop doesn't pull up, turn the handwheel toward you one more time. If it still doesn't come up, check that the bobbin thread is not trapped by the bobbin cover.



3. Bring both threads under the presser foot and toward the back of the machine.



## Before You Start Sewing

Now that your machine is threaded, we will show how to set up the machine for basic sewing techniques such as: sewing a straight stitch, sewing a decorative stitch, sewing a stretch stitch, sewing a buttonhole and sewing a button. With each technique, you have the opportunity to sew along.

For more information about the various stitches on your machine and how to use them, refer to the **Stitch Reference Guide** by visiting [www.singerco.com](http://www.singerco.com).

Here are a few other tips that you may find helpful before you begin:

When unpacking the machine, you may have noticed some small traces of oil around the needle plate or presser foot area. If so, wipe off any excess oil with a soft, dry cloth before you start sewing. It is also recommended that you sew on a piece of scrap fabric to remove excess oil.

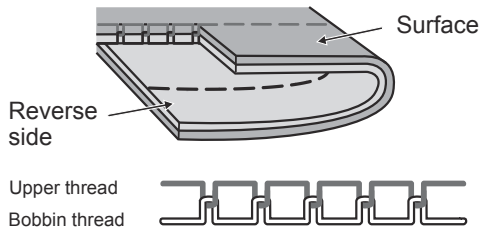
The Foot Control is used to control the speed of your sewing. When you press down on the foot control, the machine will sew. The greater the pressure you place on the Foot Control, the faster the machine will sew. When you take your foot off the Foot Control, the machine will stop.

Needles are an important part of sewing. Using old, damaged or incorrect needles for your projects can affect sewing results. For information about which needle to use for your project, refer to the **Stitch Reference Guide** at [www.singerco.com](http://www.singerco.com). For information on how to change the needle, see page 25.

Depending on the sewing technique you want to do, it may be necessary to change to a different presser foot. For information on how to do this, see page 26.

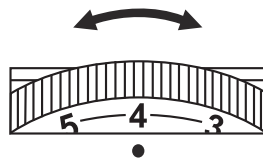
Review the page about **Stitch Formation** (see page 18). This will help you understand what the stitching should look like when you sew.

Use the thread cutter on the machine (see page 7) to trim thread tails when finished sewing. This is helpful because thread tails are left long enough so that the needle does not become unthreaded when you start sewing again.



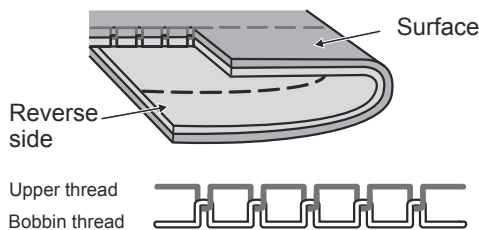
### 1. How Stitches Form

Stitches are formed when the upper thread and the bobbin thread interlock between the fabric layers. Stitching is well balanced when the needle thread appears on the top and the bobbin thread appears on the bottom.



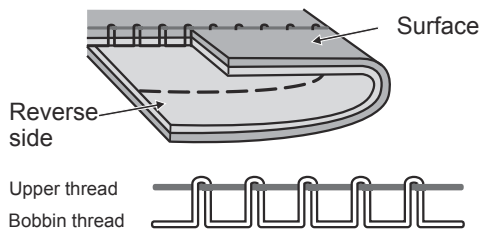
### 2. Thread Tension Dial

The Thread Tension Dial has a range of settings between 0 and 9. Most of your sewing will be done with your Thread Tension Dial set between 3 and 5. It can be adjusted to a higher number for more tension on the upper thread, if the upper thread seems too loose. It can be adjusted to a lower number for less tension on the upper thread, if the bobbin thread seems to be showing on the top side of the fabric.

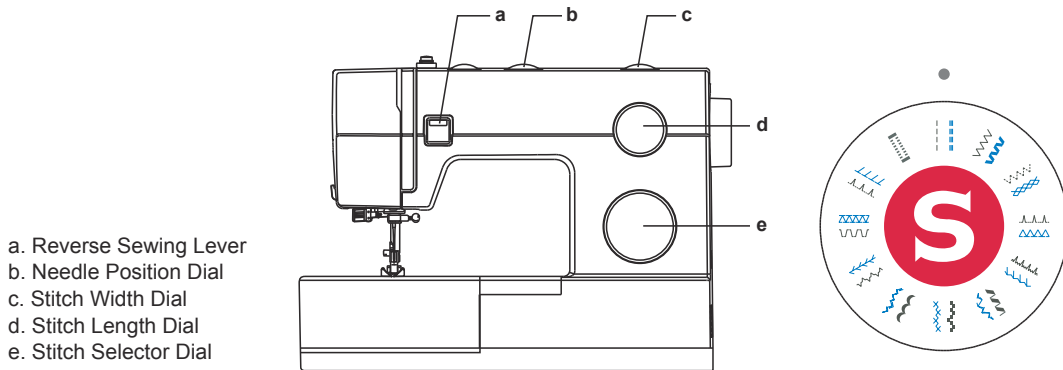


### Adjusting Tension

Thread tension can also be adjusted for various sewing techniques. For basting (see Appendix), you can loosen it to a lower number so that the stitches can easily be removed. For gathering, you can turn it to a higher number.



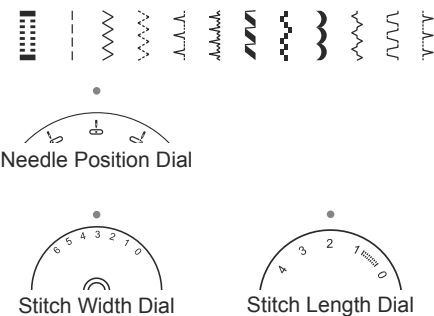
3. → When you sew, if you see large loops on the underside of the fabric, this is actually an indication that the upper thread was not threaded correctly, as it has no tension controlling it. For information on how to correct this, see the Troubleshooting and Maintenance section of this manual.



- a. Reverse Sewing Lever
- b. Needle Position Dial
- c. Stitch Width Dial
- d. Stitch Length Dial
- e. Stitch Selector Dial

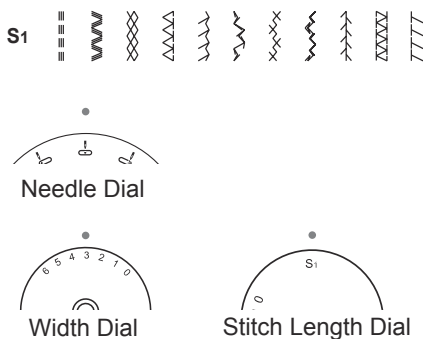
The **Stitch Selector Dial** is used to select the stitch you want to sew. The dial can be turned to the left or to the right.

### For Sewing the Black Stitch Patterns:



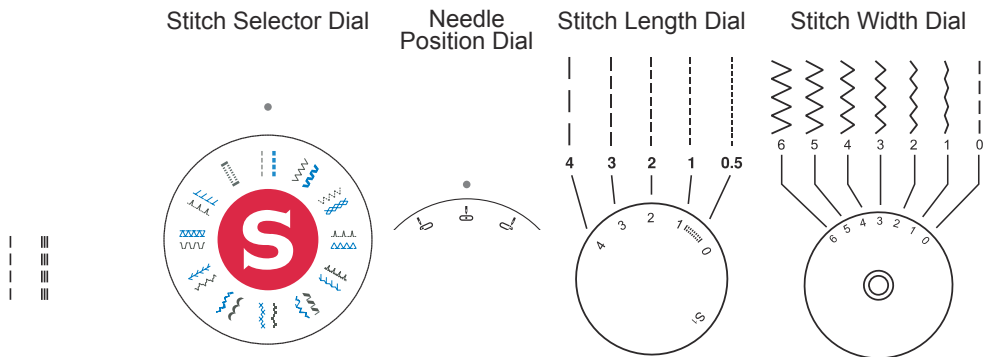
1. Turn the Stitch Selector Dial until it clicks in place under the dot directly above the dial on the machine.
2. Set the Needle Position Dial so that the center position is located directly in front of the dot on the top cover of the machine.
3. Set the Stitch Width Dial to a wide setting (4-6). If desired, you can set it to a lower setting, depending on the look you want.
4. Set the Stitch Length Dial according to the length you want. It can be set anywhere between 0.5 and 4, with 4 being the longest setting.

### For Sewing the Blue Stitch Patterns:



1. Turn the Stitch Selector Dial until it clicks in place under the dot directly above the dial on the machine.
2. Set the Needle Position Dial so that the center position is located directly in front of the dot on the top cover of the machine.
3. Set the Stitch Width Dial to a wide setting (4-6). If desired, you can set it to a lower setting, depending on the look you want.
4. Set the Stitch Length Dial so that the S1 is lined up with the dot above this dial. This dial must be set at the S1 marking, or the stitch pattern will not sew.

For examples of stitch patterns and further instruction, see the Stitch Reference Guide at [www.singerco.com](http://www.singerco.com).



A straight stitch is used for sewing seams and topstitching.

#### HOW TO:

1. Set the machine for Straight Stitch by setting the Stitch Selector Dial to straight stitch. (see page 19)
2. Set the Needle Position Dial to the center marking. (See page 26)
3. Set the Stitch Width Dial to 0. (see page 19)
4. The Stitch Length Dial control can be set at the stitch length that you desire. (see page 19)

#### SEW ALONG:

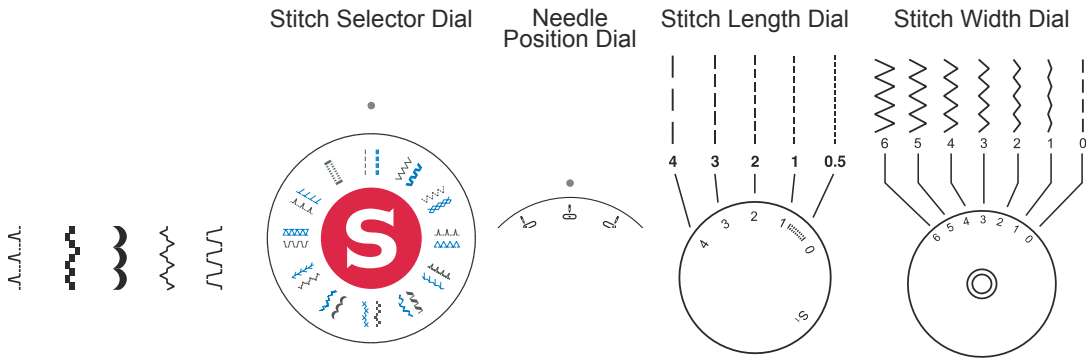


1. Set the Stitch Selector Dial so that the straight stitch symbols are directly below the dot.
2. Set the Needle Position Dial so that the center position is located directly in front of the dot on the top cover of the machine. (See page 26)
3. Set the Stitch Width Dial so that 0 sits directly in front of the dot on the top cover of the machine. (See page 19)
4. Set the Stitch Length Dial control so that the number 2 is directly below the dot on the machine. This is an average stitch length setting for regular sewing.
5. Place the fabric under the All Purpose Foot with the right-hand edge of the fabric lined up with the desired seam guide line on the right side of the needle plate. Lower the presser foot, then step on the Foot Control to begin sewing. Always make sure that the presser foot is lowered before you begin to sew. If you fail to do so, the machine will jam as you begin to sew. Start your seam by sewing 2 to 3 stitches. Press the Reverse Lever to sew backwards 2 to 3 stitches, which will lock the end of the seam so the stitches don't come undone. Release the Reverse Lever to sew forward again. Continue sewing the length of the seam. Press the Reverse Lever at the end of the seam and sew backwards 2 to 3 stitches. Release the Reverse Lever to sew forward again to finish.

✓ Use a slightly shorter stitch length for lightweight fabrics, finer threads and needles. Use a longer stitch length such as 3 or 4 for heavy weight fabrics.

✓ It may be helpful to gently hold the thread tails with your left hand for the first few stitches, as this will help guide the fabric under the foot as you begin to sew.

## Sewing a Decorative Stitch

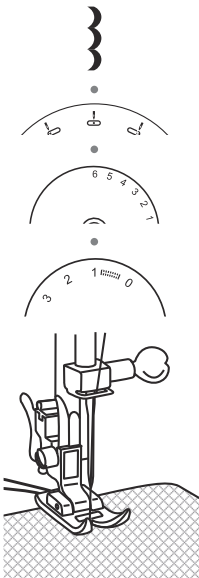


Decorative stitches can be used for embellishing and personalizing your sewing projects. (Go to [www.singerco.com](http://www.singerco.com) to view other decorative stitches that can be used).

### HOW TO:

1. Set the machine to the desired stitch by setting the Stitch Selector Dial to one of the decorative stitches. (See page 19)
2. Set the Needle Position Dial to the center marking. (See page 26)
3. Set the Stitch Width Dial to between 2 and 6, depending on how wide you want your stitch to be. (See page 19)
4. Set the Stitch Length Dial between 0.5 and 3. (See page 19)

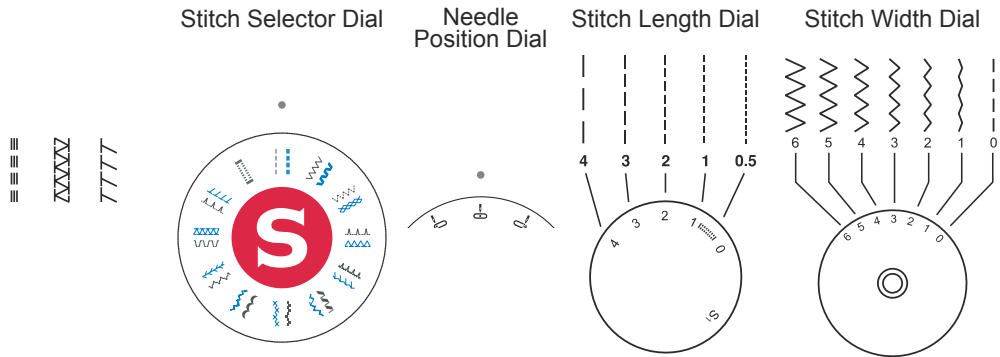
### SEW ALONG: Scallop Stitch



1. Set the Stitch Selector Dial, so that the Scallop Stitch setting is directly below the dot.
2. Set the Needle Position Dial so that the center position is located directly in front of the dot on the top cover of the machine. (See page 26)
3. Set the Stitch Width Dial so that 6 sits directly in front of the dot on the top cover of the machine. (See page 19)
4. Set the Stitch Length Dial control so that number 1 is directly below the dot on the machine.
5. Place the fabric under the All Purpose Foot with the right-hand edge of the fabric lined up with the desired seam guide line on the right side of the needle plate. Lower the presser foot, then step on the foot control to begin sewing. Sew 2 to 3 stitches and then backstitch (see page 20) to reinforce the seam.

✔ Use a stabilizer (see Appendix) on the underside of the fabric if there is gathering or puckering as you sew. Decorative stitching can be used almost anywhere on your project!

✔ It may be helpful to decrease the upper tension by 1 or 2 numbers when sewing decorative stitches. This will help prevent the bobbin thread from possibly showing on the top when sewing denser stitches.

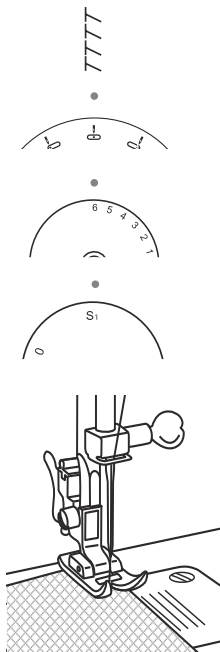


A stretch stitch is used for stretch knit fabrics. This type of seam will stretch with the fabric. (Go to [www.singerco.com](http://www.singerco.com) to view other stretch stitches that can be used).

#### HOW TO:

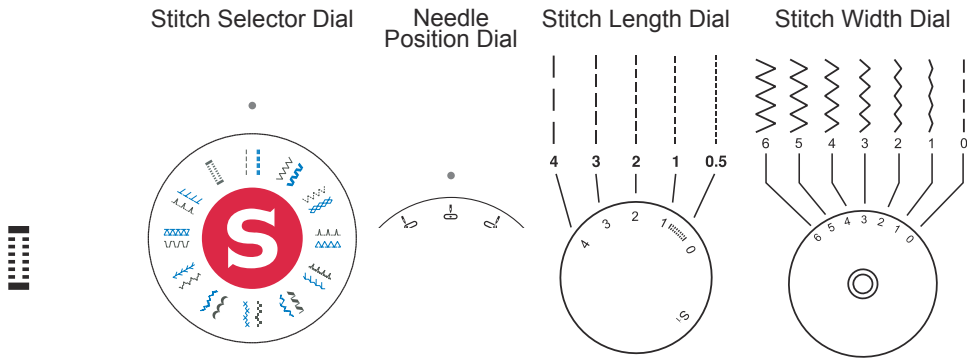
1. Set the machine to the desired stitch by setting the Stitch Selector Dial to one of the stretch stitch settings. (See page 19)
2. Set the Needle Position Dial to the center marking. (See page 26)
3. Set the Stitch Width Dial to between 2 and 6, depending on how wide you want your stitch to be. (See page 19)
4. Set the Stitch Length Dial to the Stretch S1 setting for the blue stitches. (See page 19)

#### SEW ALONG: Overedge Stitch



1. Set the Stitch Selector Dial, so that the Overedge Stitch setting is directly below the dot.
2. Set the Needle Position Dial so that the center position is located directly in front of the dot on the top cover of the machine. (See page 26)
3. Set the Stitch Width Dial so that 6 sits directly in front of the dot on the top cover of the machine. (See page 19)
4. Set the Stitch Length Dial control so that the S1 setting is below the dot.
5. Place the fabric under the All Purpose Foot with the right-hand edge of the fabric lined up with the desired seam guide line on the right side of the needle plate. Lower the presser foot, then step on the foot control to begin sewing.

## Sewing a 1-Step Buttonhole

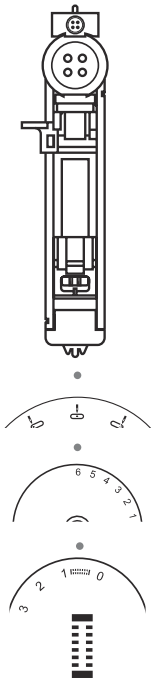


This machine has a built-in buttonhole feature, allowing you to sew buttonholes in one easy step. The Stitch Selector Dial shows the buttonhole settings in black.

### HOW TO:

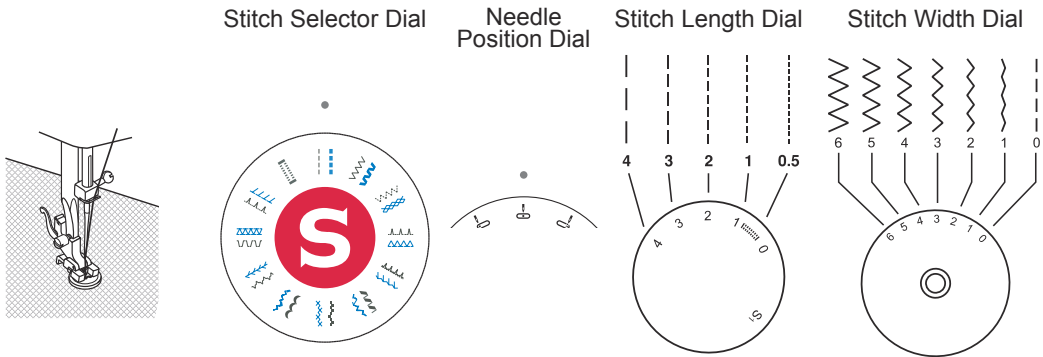
1. Set the machine to the desired stitch by setting the Stitch Selector Dial to the buttonhole stitch. (see page 19)
2. Set the Needle Position Dial to the center marking. (See page 26)
3. Set the Stitch Width Dial to the widest setting of 6. The width may be reduced if desired. (See page 19)
4. Set the Stitch Length Dial within the buttonhole range. (See page 19)

### SEW ALONG: Buttonhole Stitch



1. Place the button at the back of the buttonhole foot. Mark position and length of buttonhole on the fabric.
2. Remove the All Purpose Foot and attach the Buttonhole Foot (see page 26). Pass upper thread through the hole of the foot and bring thread to the left.
3. Set the Stitch Selector Dial so that the buttonhole symbol is directly below the dot.
4. Set the Needle Position Dial so that the center position is located directly in front of the dot on the top cover of the machine. (See page 26)
5. Set the Stitch Width Dial so that 6 sits directly in front of the dot on the top cover of the machine. (See page 19)
6. Set the Stitch Length Dial control so that the buttonhole range is directly below the dot.
7. Place the fabric under the foot so that the center line mark on your fabric is aligned with the center of the Buttonhole Foot and that the cross line mark on the fabric aligns with the center hole of the Buttonhole Foot. Lower the presser foot.
8. Pull the Buttonhole Lever all the way down and then carefully push it back. The Buttonhole Lever must sit in front of the notch located on the left of the Buttonhole Foot.
9. Hold upper thread slightly and start to sew until the buttonhole is completed.
10. Return the Buttonhole Lever to its original position once all buttonholes are completed.

- ➔ Use a stabilizer to support the stitches.
- ➔ Slightly reducing your upper tension by 1 or 2 numbers will improve results.
- ➔ Always test sew on a scrap piece of your fabric.
- ➔ It may be necessary to adjust the balance of the buttonhole. (See page 26)

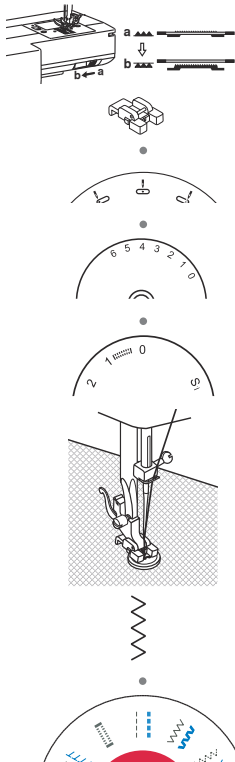


This machine includes a Button Sewing Foot, allowing you to attach buttons to your projects easily and quickly.

#### HOW TO:

1. Set the machine to Straight Stitch by turning the Stitch Selector Dial to the Straight Stitch Symbol. (see page 19)
2. Set the Needle Position Dial to the center marking. (See page 26)
3. Set the Stitch Width Dial to 4. (See page 19)
4. Set the Stitch Length Dial to 0 to begin. (see page 19)

#### SEW ALONG: Attaching a Button



1. Lower Feed Teeth by pushing the Drop Feed Control to the left from a to b.
2. Remove the All Purpose Foot and attach the Button Sewing Foot. (see page 26).
3. Set the Needle Position Dial so that the center position is located directly in front of the dot on the top cover of the machine. (See page 26)
4. Set the Stitch Width Dial so that 4 sits directly in front of the dot on the top cover of the machine. (See page 19)
5. Set the Stitch Length Dial control so that 0 is directly below the dot.
6. Set the Stitch Selector Dial so that the Straight Stitch setting is directly below the dot.
7. Place the button on the fabric, then line up the button directly under the front of the Button Foot so the 2 holes of the button appear in front of the foot. Turn the hand wheel toward you to make sure the needle clears the hole on the left. Step on the Foot Control and sew 3 to 4 securing stitches. Raise the needle out of the fabric and the button.
8. Set the Stitch Selector Dial so that the Zig Zag setting is directly below the dot. Adjust the Stitch Width Dial until the needle moves from the left hole into the right hole of the button without interference. To test the movement of the needle slowly turn the handwheel manually toward you several times to make sure the needle does not hit the button. Sew 10 to 12 stitches.
9. Set the Stitch Selector Dial so that the Straight Stitch setting is directly below the dot.
10. Sew 3 to 4 stitches to secure the stitching.

✓ Raise the feed teeth when finished.



## Inserting and Changing Needles

 Turn the machine off before changing the needle.

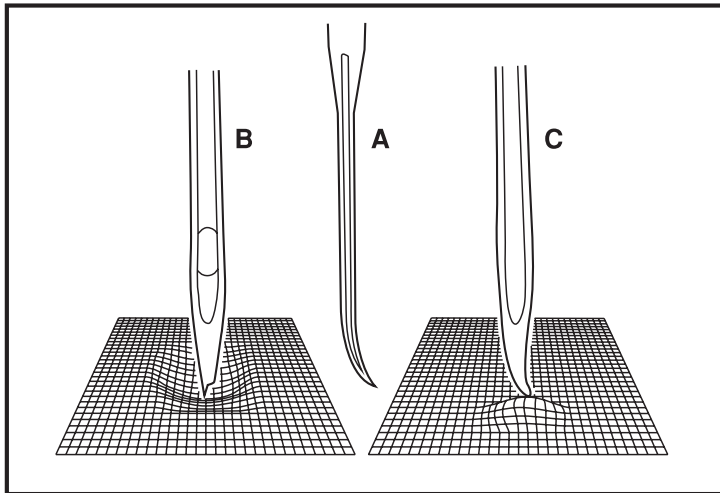
Change the needle regularly, especially if it is showing signs of wear resulting in sewing problems. Needles can show signs of wear when you see snags in the fabric or hear a slight popping sound as you are sewing.

If the needle becomes bent (A), the point becomes damaged (B) or the needle becomes dull (C), you should replace it with a new needle and discard the old one.

Generally, the needle should be replaced after every 4 projects or approximately every 16 hours of sewing time.

It is also important to use the right needle for the fabric you are sewing. (Go to [www.singerco.com](http://www.singerco.com) to view the Stitch Reference Guide)

For best results, use **SINGER®** branded needles in your **SINGER®** sewing machine.

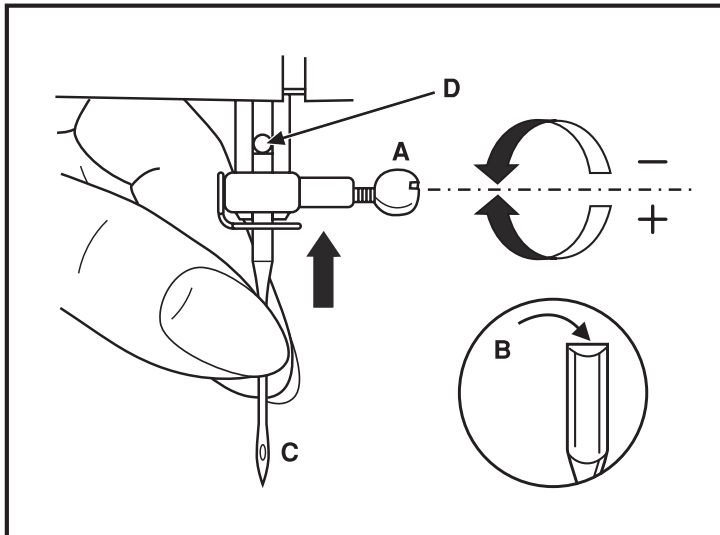


Loosen the needle clamp screw (A) by turning the screw toward you. Remove and discard the old needle.


Insert the new needle, making sure that the flat side of the top part of the needle is facing the back of the machine (B).

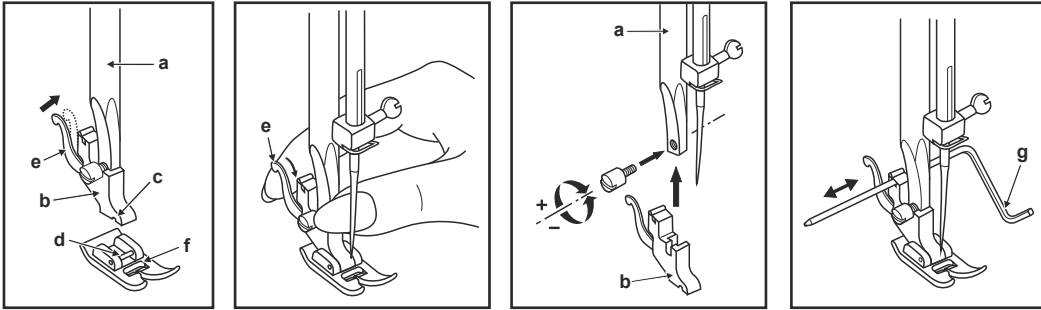
Insert the new needle as far up as it will go (C and D).

Tighten the needle clamp screw (A) securely by turning it toward the back.



## Changing the Presser Foot

 For safety, turn off the power before changing the presser foot.




Before changing the presser foot, raise the presser foot lifter.

The presser foot holder (b) is attached to the presser bar (a). The presser foot (f) has a presser foot pin (d) that connects to the presser foot holder, sometimes called a shank (b). The shank has a groove (c) on its underside, which connects it to the presser foot.

To remove a presser foot from the shank, press the lever (e) at the back. The foot will release. To attach a presser foot, slide the pin (d) of the presser foot (f) into the groove (c) on the shank. The foot will snap on.

Some optional presser feet require you to remove the shank from the machine. To remove the shank from the machine (see above) loosen and remove the screw that holds the presser foot onto the presser bar (a), then remove the shank (b). To replace the shank, set the shank onto the presser bar, then replace the screw.

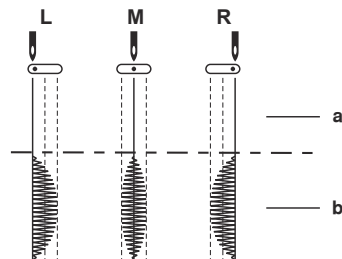
Your machine is equipped with an Edge/Quilting Guide. To attach the guide (g) slip it into the slot as illustrated. Adjust the position depending on the technique you are doing.

 This machine has a low shank with snap-on presser feet. When shopping for optional presser feet and attachments for your machine, look for low-shank, snap-on style.

## Needle Position Dial

- |                      |                    |
|----------------------|--------------------|
| 1. L-Left position   | a. Straight Stitch |
| 2. M-Middle position | b. ZigZag Stitch   |
| 3. R-Right position  |                    |

The needle position can be set to the center or it can be moved to the left or the right. For most tasks the needle will be set at the center position. For edge stitching or sewing parallel lines of topstitching, set the dial to the left or to the right. The position you have selected should appear directly in front of the dot on the top cover of the machine.

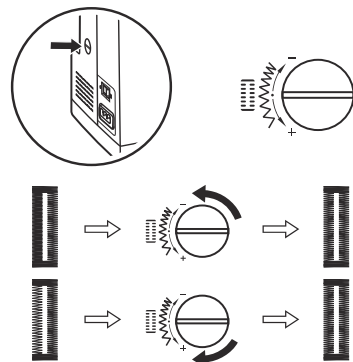


## Left and Right Side Balance for Buttonhole

The stitch density on the left side (leg) of the buttonhole can be adjusted so that it matches the right side (leg) of the buttonhole.

The dial is pre-set to the center point between the + and the - at the factory.

If the stitches on the left side (leg) of the buttonhole are too close together, turn the dial to the left to open up the stitches. If the stitches on the left side are too far apart, turn the dial to the right to close up the stitches.



1. Thread Loops on Underside of Fabric
2. Bobbin Thread Showing on Top of Fabric
3. Upper Thread Breaking
4. Thread is Shredding
5. Thread Bunching at Beginning
6. Skipping Stitches
7. Bobbin Winding Difficulties
8. Bobbin Thread Breaking
9. Needles Breaking
10. Stitches Distorted
11. Fabric Puckers
12. Fabric Is “Tunneling” Under Stitches
13. Machine Not Feeding Fabric
14. Needle Threader Not Working
15. Loud Noise When Sewing
16. Machine Will Not Run

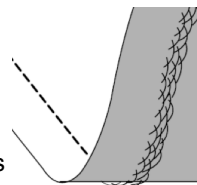
### 1. THREAD LOOPS ON UNDERSIDE OF FABRIC

**Possible Cause:** Thread looping on the underside of the fabric is always an indication that the upper thread is not correctly threaded. This happens when the upper thread is not correctly placed in the tension mechanism and has not been threaded through the take up lever.

**Solution:** Rethread machine, making sure to first raise the presser foot lifter before starting to thread, so thread can be properly seated in the tension mechanism and take up lever. (See Page 14)

To know if you have rethreaded the machine correctly, try this simple test:

- Raise the presser foot lifter and thread the top of the machine.
- Thread the needle, but don't put the thread under the presser foot yet. As you pull the upper thread to the left, it should pull freely.
- Put the presser foot lifter down. As you pull the upper thread to the left, you should feel resistance. This means you are threaded correctly.
- Put the thread under the presser foot, and then draw up the bobbin thread. Slip both thread tails under the presser foot towards the back. Lower presser foot and begin sewing.



If you put the presser foot lifter down, but the thread still pulls freely (you feel no difference whether the presser foot is up or down), this means you have threaded incorrectly. Remove the upper thread and rethread the machine.

### 2. BOBBIN THREAD SHOWING ON TOP OF FABRIC

**Possible Cause:** Top thread tension too tight.

**Solution:** Reduce upper thread tension. (See Page 18)

**Possible Cause:** Thread path is obstructed, putting extra tension on top thread.

**Solution:** Check that the top thread path is not obstructed and thread is moving freely through the thread path. (See Page 14)

**Possible Cause:** Bobbin thread not in bobbin case tension.

**Solution:** Rethread bobbin. (See Page 13)

**3. UPPER THREAD BREAKING**

**Possible Cause:** Thread path obstructed.

**Solution:** Check if thread is caught on thread spool (rough spots on the spool itself) or behind spool pin or spool cap (if the thread has fallen behind the spool cap and therefore cannot feed freely through the machine path). (See Page 14)

**Possible Cause:** Machine is not threaded correctly.

**Solution:** Remove upper thread completely, raise presser foot lifter, rethread machine making sure thread is in take-up lever (raise take up lever to its highest position by turning hand wheel toward you). (See Page 14)

**Possible Cause:** Upper tension too tight.

**Solution:** Reduce upper thread tension. (See Page 18)

**4. THREAD IS SHREDDING**

**Possible Cause:** Thread is old or poor quality.

**Solution:** Rethread the top of the machine and bobbin with good quality thread. (See Page 14)

**Possible Cause:** The needle is either worn or old, or it is the wrong style or size for the thread being used. Though it may seem that the machine is shredding the thread, it is usually the needle causing this. If the needle is old or worn out, or if the needle is too small for the thickness of thread, the eye of the needle can cause the thread to shred.

**Solution:** Change to a fresh needle in the correct size for the thickness/weight of thread being used. (See Page 25)

**5. THREAD BUNCHING AT BEGINNING**

**Possible Cause:** Top & bobbin threads have not been properly placed underneath presser foot before starting to sew.

**Solution:** Ensure that both the top thread and the bobbin thread are under the presser foot and toward the back before starting to sew. (See Page 20)

**Possible Cause:** Sewing was started with no fabric under the presser foot.

**Solution:** Place fabric under foot, making sure that needle comes down into fabric; lightly hold both thread tails for first few stitches. (See Page 20)

**6. SKIPPING STITCHES**

**Possible Cause:** Needle inserted incorrectly.

**Solution:** Check that flat side of needle top is toward back of machine and needle is up as far as it can go, then tighten needle clamp screw. (See Page 25)

**Possible Cause:** Wrong needle for fabric sewn.

**Solution:** Use correct style & size of needle for fabric. (Go to [www.singerco.com](http://www.singerco.com) to view the Stitch Reference Guide)

**Possible Cause:** Bent, dull or damaged needle.

**Solution:** Discard needle and insert new needle. (See Page 25)

### 7. BOBBIN WINDING DIFFICULTIES

**Possible Cause:** Bobbin thread loosely wound on bobbin.

**Solution:** Rewind bobbin, making sure that the thread is placed snugly in the bobbin winding tension disk. (See Page 12)

**Possible Cause:** Bobbin winding spindle not fully engaged, therefore bobbin not winding.

**Solution:** Check that the bobbin winding spindle has been fully engaged before starting to wind. (See Page 12)

**Possible Cause:** Bobbin is winding sloppily because thread end not held at beginning of winding process.

**Solution:** Before starting to wind, hold the thread tail (coming out of the bobbin) securely, allow the bobbin to partially fill, then stop to trim the thread tail close to the bobbin. (See Page 12)

### 8. BOBBIN THREAD BREAKING

**Possible Cause:** Bobbin threaded incorrectly.

**Solution:** Check that bobbin is placed correctly in the bobbin case. (See Page 13)

**Possible Cause:** Bobbin wound too full or unevenly.

**Solution:** Bobbin thread may not have been correctly placed into bobbin winding tension disk during the bobbin winding process. (See Page 12)

**Possible Cause:** Dirt or lint in bobbin case.

**Solution:** Clean bobbin case. (See Page 32)

**Possible Cause:** Wrong bobbins being used.

**Solution:** Use **SINGER®** bobbins that are the same style as those that come with the machine – don't substitute. Your machine comes with **SINGER®** Class 15 transparent bobbins.

### 9. NEEDLES BREAKING

**Possible Cause:** Bent, dull or damaged needle.

**Solution:** Discard needle, insert new needle. (See Page 25)

**Possible Cause:** Wrong size needle for fabric.

**Solution:** Insert appropriate needle for fabric type. (Go to [www.singerco.com](http://www.singerco.com) to view the Stitch Reference Guide)

**Possible Cause:** Machine not threaded correctly.

**Solution:** Rethread the machine completely. (See Page 14)

**Possible Cause:** "Pushing" or "pulling" fabric.

**Solution:** Don't manually push/pull fabric in order to sew, but allow the machine's feed teeth to draw fabric under the presser foot as you guide it. (See Page 20)

**10. STITCHES DISTORTED**

**Possible Cause:** “Pushing” or “pulling” the fabric.

**Solution:** Don’t manually push/pull fabric in order to sew, but allow the machine’s feed teeth to draw fabric under presser foot as you guide it.

**Possible Cause:** Incorrect stitch length setting.

**Solution:** Check for correct stitch length setting. (Go to [www.singerco.com](http://www.singerco.com) to view the Stitch Reference Guide)

**Possible Cause:** Stabilizer may be needed for technique.

**Solution:** Place stabilizer underneath fabric. (See appendix in this manual)

**11. FABRIC PUCKERS**

**Possible Cause:** Top thread tension is too tight.

**Solution:** Reduce the top thread tension. (See Page 18)

**Possible Cause:** Stitch length is set too short for the fabric being sewn.

**Solution:** Increase stitch length. (Go to [www.singerco.com](http://www.singerco.com) to view the Stitch Reference Guide)

**Possible Cause:** Wrong style needle for fabric type.

**Solution:** Use correct needle style. (Go to [www.singerco.com](http://www.singerco.com) to view the Stitch Reference Guide)

**Possible Cause:** Needle too large for fabric.

**Solution:** Change to smaller size needle. (See Page 25)

**12. FABRIC IS “TUNNELING” UNDER STITCHES**

**Possible Cause:** Fabric is not properly stabilized for the density of the stitches. (for example, satin stitch applique)

**Solution:** Add a fabric stabilizer underneath the fabric to help keep the stitches from tunneling in together, forming a puckered ridge in fabric. (See Appendix in this manual)

**13. MACHINE NOT FEEDING FABRIC**

**Possible Cause:** Presser foot lifter has not been lowered onto fabric after threading.

**Solution:** Lower the presser foot lifter before starting to sew. Don’t “push” or “pull” the fabric as you sew.

**Possible Cause:** Feed teeth are disengaged (lowered).

**Solution:** If the feed teeth have been disengaged (lowered), raise them to resume regular sewing. (See page 24)

**Possible Cause:** Stitch length is set at zero.

**Solution:** Increase stitch length setting.

**14. NEEDLE THREADER NOT WORKING**

*(for models with built-in automatic needle threader)*

**Possible Cause:** Needle not in correct position.

**Solution:** Raise needle to its highest position by turning hand wheel toward you. (See Page 15)

**Possible Cause:** Needle inserted incorrectly.

**Solution:** Needle all the way up in needle clamp (See Page 25)

**Possible Cause:** Needle is bent.

**Solution:** Remove bent needle, insert new needle. (See Page 25)

**Possible Cause:** Hook pin damaged.

**Solution:** Needle Threader needs replacement; contact authorized **SINGER**® service center: Visit [www.singerco.com](http://www.singerco.com).

**15. LOUD NOISE WHEN SEWING**

**Possible Cause:** Thread not in take-up lever.

**Solution:** Rethread the machine, making sure the take up lever is in its highest position so thread goes in the eye of the take up lever – turn machine hand wheel toward you to raise the take up lever to its highest position for threading. (See Page 14)

**Possible Cause:** Thread path obstructed.

**Solution:** Check that thread is not caught on the thread spool or behind the spool cap. (See Page 14)

**16. MACHINE WILL NOT RUN**

**Possible Cause:** Bobbin winding spindle is engaged when you try to sew.

**Solution:** Disengage bobbin winding spindle. (See Page 12)

**Possible Cause:** Power cord and/or foot control not plugged in correctly.

**Solution:** Make sure power cord/foot control are correctly seated in machine and power supply. (See Page 11)

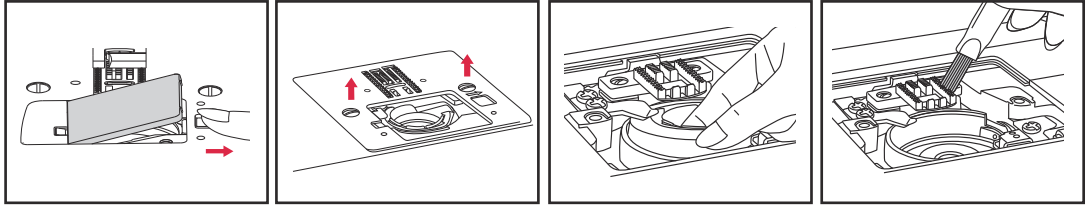
**Possible Cause:** Wrong bobbins being used.

**Solution:** Use only **SINGER**® branded bobbins that are same style as those that come with machine. (See Page 10)

### Cleaning the Feed Teeth and Hook Area



Before cleaning the machine, disconnect the power supply by removing the plug from the electrical outlet. Turn the hand wheel to raise the needle to its highest position. Raise the presser foot lifter.



To ensure the best possible operation of your machine, it is necessary to keep the essential parts clean. For daily machine use, it is recommended that you clean the machine weekly.

1. Remove the bobbin cover and then the presser foot by pressing the lever at the back of the presser foot. Removing the presser foot will provide better access to the needle plate and bobbin case area.
2. Turn the handwheel towards you until the needle is at the highest position. (The take-up lever should be visible over the top of the machine).
3. Remove the 2 screws in the needle plate using the L-screwdriver provided with your machine. Remove the needle plate.
4. Remove the bobbin from the bobbin case.
5. Take a hold of the bobbin case with your thumb and index finger at about 7 o'clock. Push it lightly to the right as you lift, the bobbin case will easily slip out of the hook race area.
6. Using the small brush that was provided with your machine remove lint and fluff from the hook race area, as well as the feed teeth area.
7. Your machine has been pre-lubricated at the factory; as a result oiling the bobbin case area is not necessary.
8. To reinsert the bobbin case, make sure the needle is at the highest position. (The take-up lever should be visible over the top of the machine).
9. Take a hold of the bobbin case with your thumb and index finger at 6 o'clock directly over the left screw at the center front of the bobbin case.
10. Guide the forked end of the bobbin case under the feed teeth and then move the bobbin case from right to left, until it is seated correctly in the hook race.
11. To ensure that the bobbin case is in the correct position, turn the handwheel towards you; the hook race should turn freely in a counter-clockwise direction.
12. Make sure the needle is again at the highest position. Reposition the needle plate over the feed teeth and secure in place using the 2 screws that you removed earlier.
13. Attach presser foot, insert bobbin and replace bobbin cover. You are now ready to sew.

### Sewing Light

This appliance is equipped with a durable LED illumination, which is expected to last for the lifetime of the equipment.

Please contact a local service agent, should the lamp nevertheless require to be replaced.



## Glossary of Key Sewing Terms

**Backstitch**

Backstitching is most commonly used at the beginning and ending of seams to lock the stitching so it does not come undone. Start sewing the beginning of the seam about 3-4 stitches, then sew in reverse for 3-4 stitches. Start sewing forward again and continue sewing the seam to the end, then sew in reverse 3-4 stitches, then forward again to finish.

**Basting**

Basting is temporary stitching, sewn using a long straight stitch and reduced tension. This temporary stitching holds fabrics together, but is intended to be removed. For example, basting the side seams of a skirt to check the fit, then the final seam is sewn and the basting stitch is removed.

**Free Arm**

In order to sew small, tubular projects such as a pant leg, sleeve cuff, etc, you will need to take the removable storage compartment off the machine, giving access to the free arm.

**Interfacing**

Interfacing is specially designed material, sewn between fabrics, used to provide additional structure to parts of a garment, for example, cuffs, collars, plackets, etc. It can be used for buttonholes to help keep the fabric stable while sewing.

**Raw Edge**

The raw edge of the fabric refers to the cut edge and usually becomes the edge of the seam allowance.

**Seam**

A seam is stitching that joins two fabrics together, includes the main stitching line and the seam allowance.

**Seam Allowance**

The seam allowance is the amount of fabric between the seam stitches and the raw edge of the fabric. The most popular seam allowance are 5/8" and 1/2".

**Seam Finish**

Seam finishing is stitching used to keep a raw edge from unraveling or fraying.

**Stabilizer**

Stabilizer is special material used to provide additional support for stitches for special techniques such as decorative machine stitching, appliqué, buttonholes and more.

**Topstitching**

Topstitching is straight stitching that appears on the top side of the fabric, used for adding strength, embellishment or both.



Please note that on disposal, this product must be safely recycled in accordance with relevant National legislation relating to electrical/electronic products. Do not dispose of electrical appliances as unsorted municipal waste, use separate collection facilities. Contact your local government for information regarding the collection systems available. When replacing old appliances with new ones, the retailer may be legally obligated to take back your old appliance for disposal free of charge.

If electrical appliances are disposed of in landfills or dumps, hazardous substances can leak into the groundwater and get into the food chain, damaging your health and well-being.



**SINGER®**

**471335026A SINGER®** is a registered trademark of The **SINGER®** Company Limited or its affiliates. ©2016 The **SINGER®** Company Limited or its affiliates. All rights reserved.