

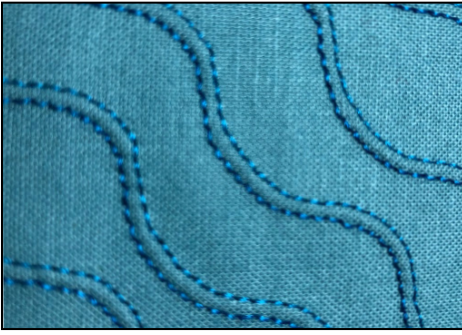
## Quilted Table Runner: Tips & Hints



Use your SINGER® | Elite sewing machine to design a custom table runner! The center area of this runner features an assortment of prints and solid fabrics embellished various ways with decorative stitching to introduce interesting texture. The fabrics were cut into strips, pieced together, then joined on each side with a solid color to finish the topper. A batting and backing were then added, and a self-binding technique was used to finish the runner. Here are tips to help you design your own version of this runner!

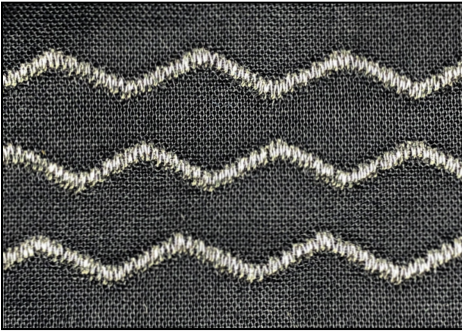
### Materials Needed

- SINGER® 3.0mm Twin Needle, Size 90/14
- SINGER® Topstitch Needle, Size 90/14
- SINGER® Parallel Sewing Foot - helps guide fabric straight while sewing multiple rows of stitching
- SINGER® Even Feed Foot - for quilting the top, batting and backing together
- SINGER® Satin Stitch Foot - for sewing dense decorative stitches
- SINGER® Quarter-Inch Foot - for sewing accurate 1/4" seams when quilt piecing
- Quilting Cotton - assorted solids and prints
- Low-Loft Quilt Batting
- Inspira® Tear-N-Wash Stabilizer - placed underneath fabric to support stitches; tears away easily, excess washes away



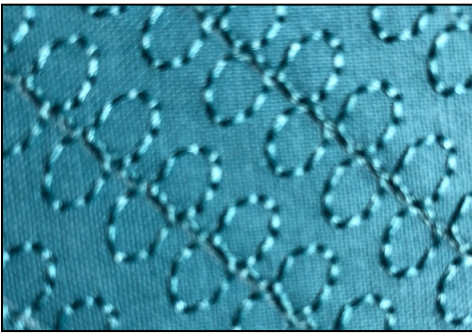
## Twin Needle Sewing

Sewing with a twin needle for decorative embellishment adds dimension to your project. For this table runner, a size 3.0mm twin needle was used. Because the twin needle is wide, reduce the stitch width setting on the machine, and then test first by turning the hand wheel slowly to check that the left and right movement of the twin needle clears both sides of the presser foot. Make sure both threads are unreeling off the spools in opposite directions to ensure that the threads don't tangle.



## Stitching with Metallic Threads

Metallic threads can add sparkle to your projects and create interesting texture. Use a topstitch needle, which has a longer eye to accommodate the properties of metallic thread and help eliminate thread shredding. For denser stitches, use a Satin Stitch Foot, which has a groove on the underside to allow dense stitches to pass freely underneath. Use all-purpose or polyester thread in the bobbin, and a tear-away stabilizer. Slow down your sewing speed as well.



## Creative Ideas for Lettering

If your machine has built-in lettering and number characters, consider using one of the letters or numbers as a decorative stitch! In this runner, the letter "O" was used as a decorative stitch to create interesting texture to the fabric. The Parallel Sewing Foot is helpful for guiding the fabric straight so the rows of stitching are nice and even. Try using rayon threads for a bit of sheen, with an all-purpose thread in the bobbin.



## Decorative Stitching

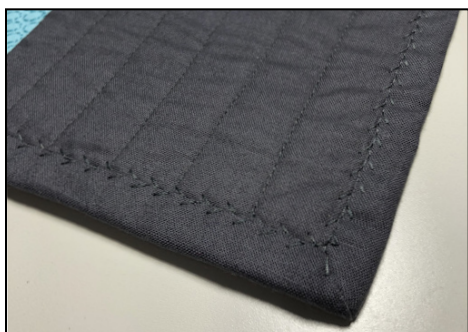
Combine different stitches to create design in your fabrics. Here, the Straight Stretch Stitch and the Reinforced Zigzag Stitch form an "argyle" pattern. For a bold look, try a 30 weight cotton thread in the needle, all-purpose thread in the bobbin, and a size 90 top stitch needle. Use a Parallel Sewing Foot to help guide the fabric straight as you stitch.





## Quilting the Fabric

Quilt piecing for the strips in the middle of the runner can be done using a Quarter Inch Foot. Then, quilt the fabric layers together with a straight stitch, with the rows spaced about 1" apart, and use a thread color that blends well with the fabric. Use an Even Feed Foot to help the fabric layers feed evenly as you quilt. Safety pins can also be used to help secure the top, batting and backing to keep them from puckering or slipping.



## Adding a Binding

Self-binding is an easy way to finish runners, quilts and more.

- After quilting the layers together, trim only the top and batting to the finished size desired.
- Trim the backing one inch wider than the top and batting piece, on all four sides.
- Press the backing toward the front of the runner.
- Press the raw edge under ½", folding under at all for corners to form miters. Pin to secure.
- Stitch the binding with a straight stitch or decorative stitch.

