

SINGER® PROJECTS

Light Sword Popsicle Holder



PROJECT SKILL LEVEL: ■ □ □ □

Shopping List

Everything you need to complete this project in one place. Use this convenient checklist to ensure you have all required materials in your sewing room, or take it with you while you shop for supplies.

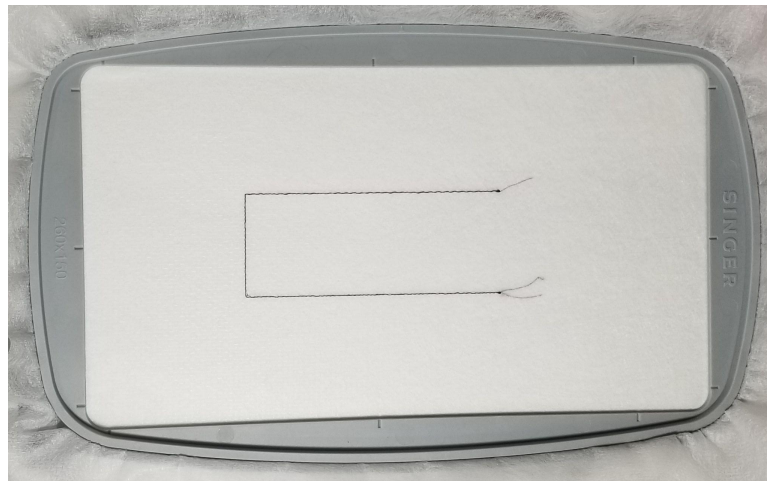
- o Singer Legacy™ SE300 Sewing and Embroidery Machine
- o 130mm x 180mm (5" x 7") or larger Embroidery Hoop
- o INSPIRA® Aqua Magic™ Stabilizer 12" x 25 yds
- o Embroidery Thread; Black, Red & Blue
- o Gray Felt - Cut x2 @ 3.5" x 6.5"
- o Masking Tape
- o Embroidery Design Provided

Project Steps

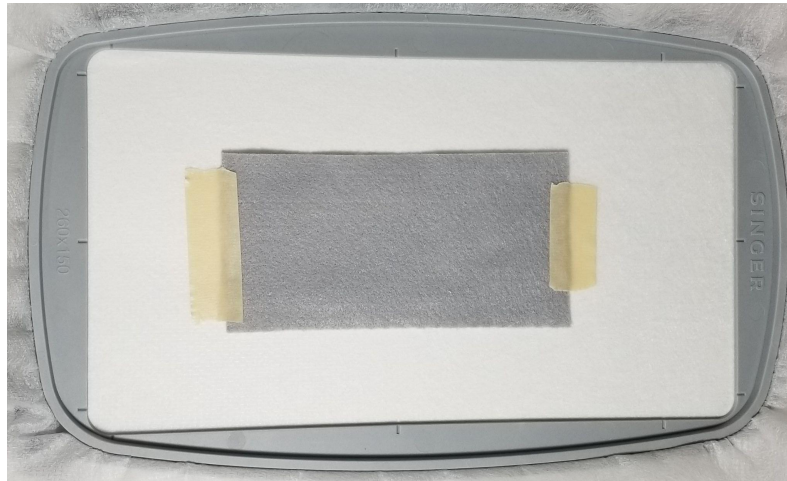
1. Load provided design to the embroidery machine.
2. Hoop embroidery hoop with INSPIRA® Aqua Magic™ Stabilizer.



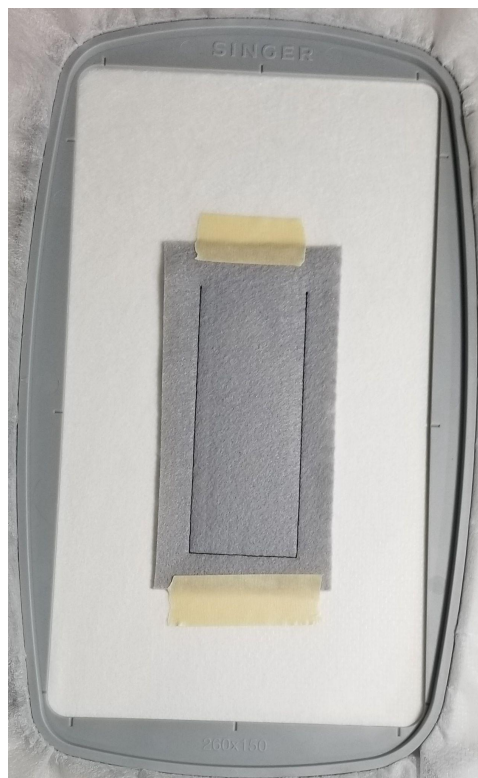
3. Place the hoop on the embroidery arm & stitch out placement stitch (step 1).



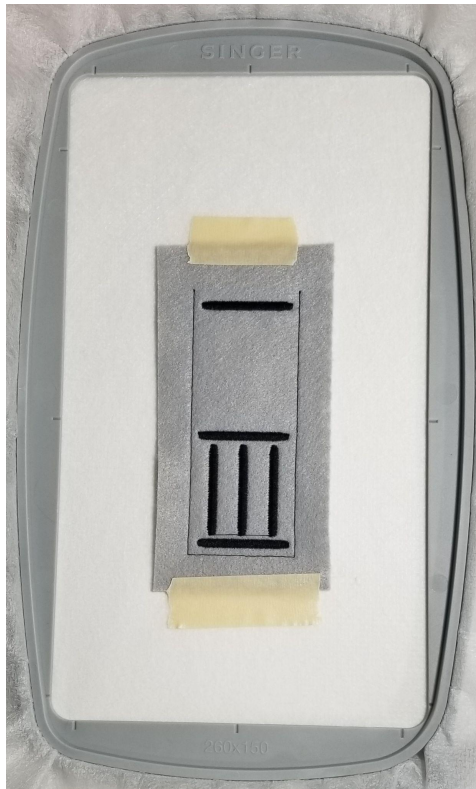
4. Tape one of the 3.5" x 6.5" felt pieces over the placement stitch.



5. Place the hoop on the embroidery arm & stitch out tack down outline stitch (step 2).



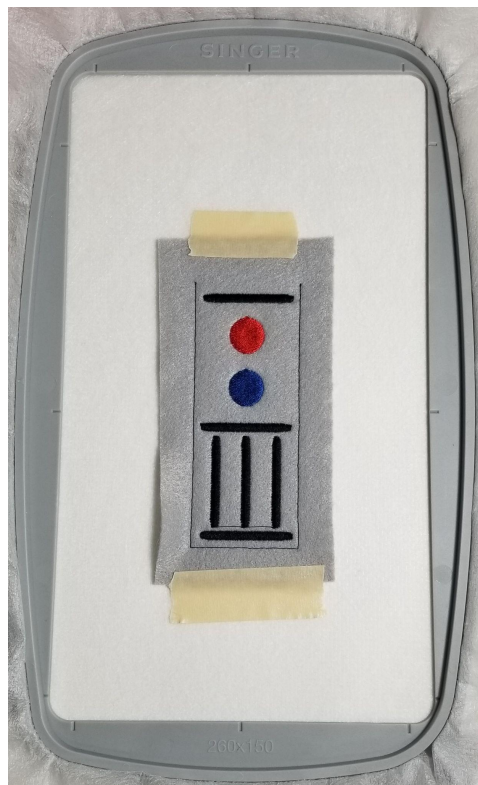
6. Stitch out decorative lines (step 3).



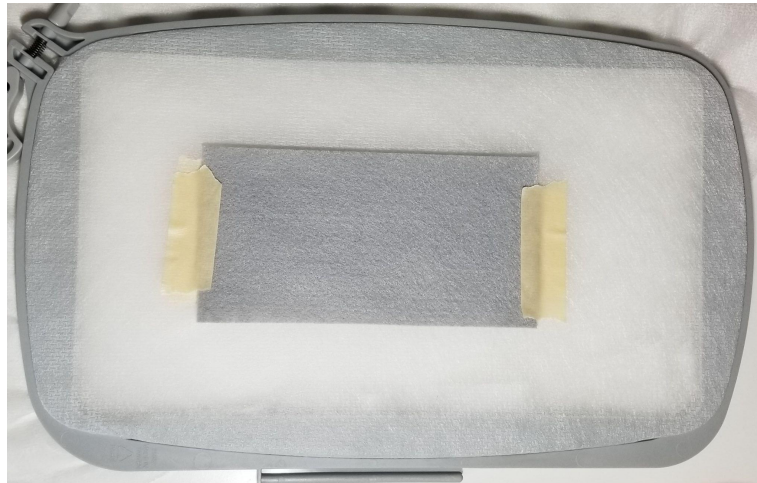
7. Stitch out top button (step 4).



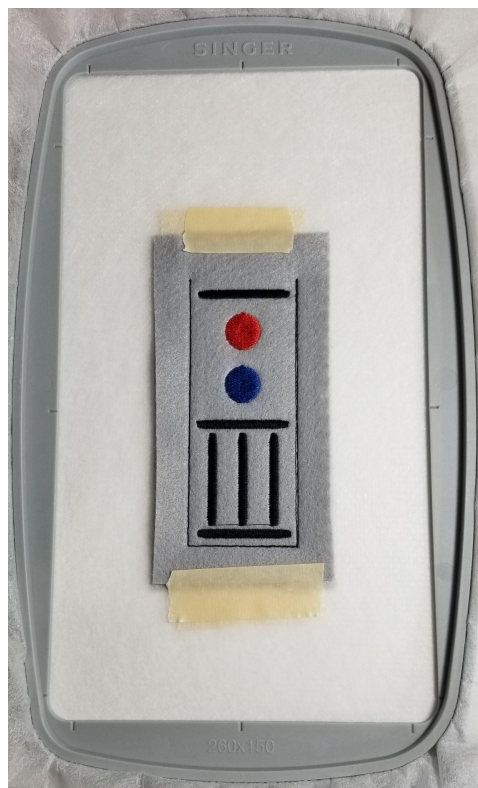
8. Stitch out bottom button (step 5).



9. Remove the hoop.
10. Tape the second 3.5" x 6.5" felt piece to the back of the hoop, making sure to cover the placement stitch.



11. Stitch out outline running stitch attaching the front & back (step 6).



12. Remove from the hoop & trim close to the edges.



13. Add your favorite popsicle & enjoy!

